



COMPANY PROFILE

**THE
URBAN SOLUTIONS**
Pvt. (Ltd)



1.	CEO MESSAGE	2.	COMPANY INTRODUCTION	3.	OUR VISION	4.	OUR APPROACH	5.	DESIGN PHILOSOPHY	6.	ORGANOGRAM	7.	OUR SERVICES AT A GLANCE	8.	ARCHITECTURAL DESIGN	9.	URBAN PLANNING	10.	URBAN DESIGN	11.	OUR ALLIES	12.	PROMINENT CLIENTS	13.	REGISTRATIONS
----	-------------	----	----------------------	----	------------	----	--------------	----	-------------------	----	------------	----	--------------------------	----	----------------------	----	----------------	-----	--------------	-----	------------	-----	-------------------	-----	---------------

CEO MESSAGE

I am humbled to be a part of your life, for I believe that by involving US into planning and designing of your spaces, you bestow US the power of leaving a mark on not just project spaces but the very homes and lives of users. For US, design is client centered, and we strive to deliver your aspirations embedding ingenuity with innovation. I ensure that my team here delivers to the utmost standards & we remain a happy part of your life!

Syed Rizwan Munir
C.E.O/Founder
The Urban Solutions Pvt. Ltd.

DESIGN PHILOSOPHY



***IN DESIGNING OF SPACES ARCHITECTURE
TRANSCENDS TIME AND SPACE***

Our design philosophy focuses on kneading pragmatic thinking with out of the box innovative design ideas. Immense energy and effort is put into creating original themes, embedding aspirations to create places convenient to live, work and relax!

At the Urban Solutions in designing of spaces Urban Planning & architecture transcends time and space. Function takes over form while creating empathy and focus. Whether the design is simplistic, classical, retro or minimalistic arrangement of spaces ensures to foster an environment of positive social interactions.

OUR SERVICES AT A GLANCE

URBAN PLANNING & ENGINEERING DESIGN SERVICES

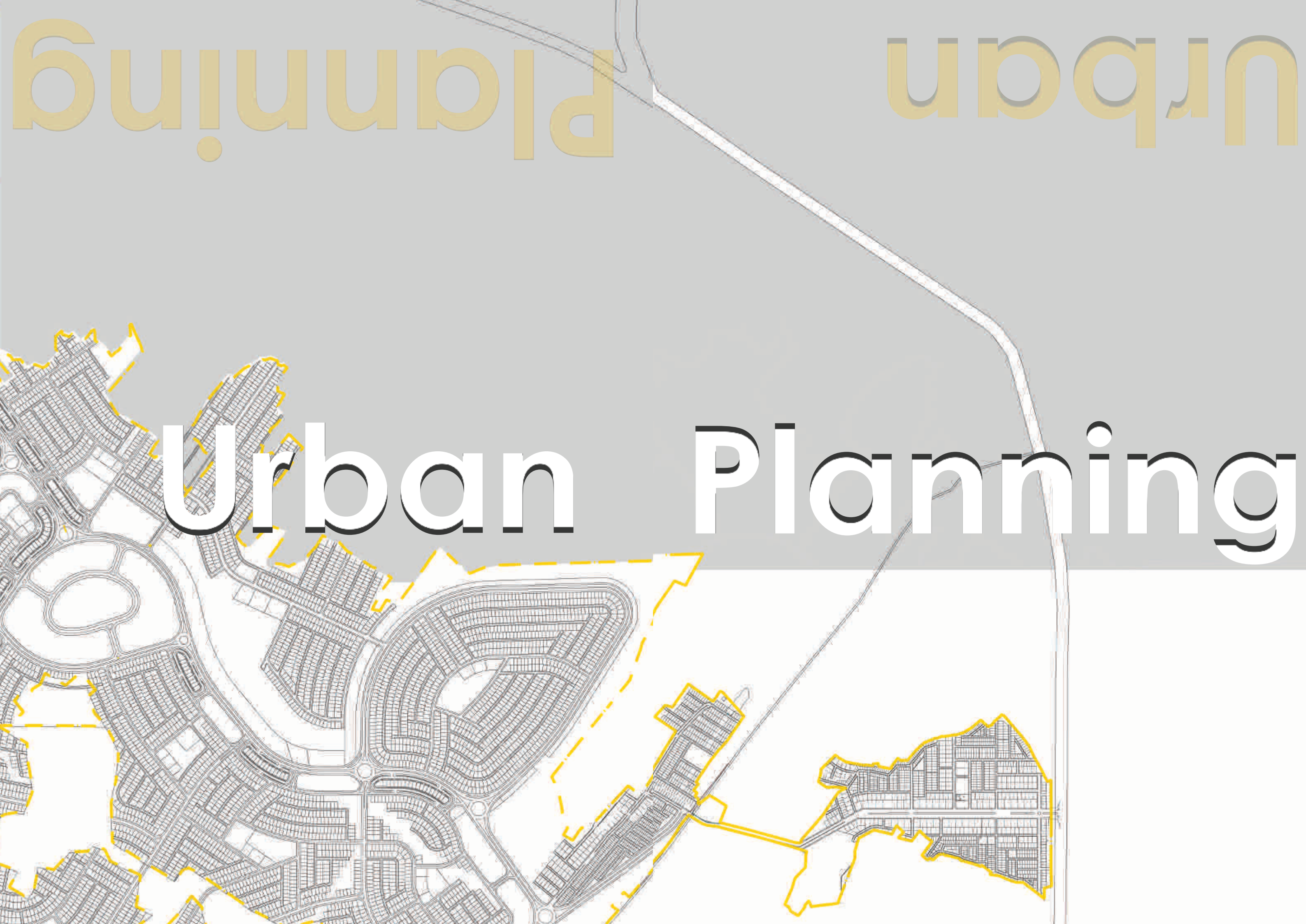
- Topographic Surveys
- Hydrological Studies
- Geotechnical Studies
- Electrical Resistivity Surveys
- Land Use/ Physical/ Housing Schemes Planning
- Urban Design Services
- Detailed Engineering Design Services Including:
 - Road Design & Allied Works Calculations
 - Water Reticulation Network Design Along with Reservoirs Design
 - Water Resource
 - Sewerage System Design
 - Drainage System Design
 - Water & Sewage Treatment Plants Design
 - Electrical & Other Utilities Plans
- Preparation Of Tender Documents (Including Estimates & B.O.Qs)
- Construction Supervision Services
 - Road Works Construction Supervision
 - Infrastructure Construction Supervision
 - Building Construction Supervision
- Design Review & Design Guidelines
- Technical Report Writing
(Land Use/Master Planning Reports, Inception/Interim/Final Reports)

ARCHITECTURAL & INTERIOR DESIGN SERVICES

- Architectural Design, Structural Design & Building Services Design Including Plumbing, Electrical, Mechanical, HVAC) Of;
 - Residential Projects
 - Commercial Projects
 - Buildings Projects
 - Landscape Design
 - Urban Spaces Design
- Interior Design Services
 - Residential Projects
 - Commercial Projects
 - Buildings Projects
- Landscape Design Services
 - Conceptual & Detailed Landscape Plans
 - 3D Renders of Landscape Design
 - Detail of Plants Along With BOQs

ORGANOGRAM



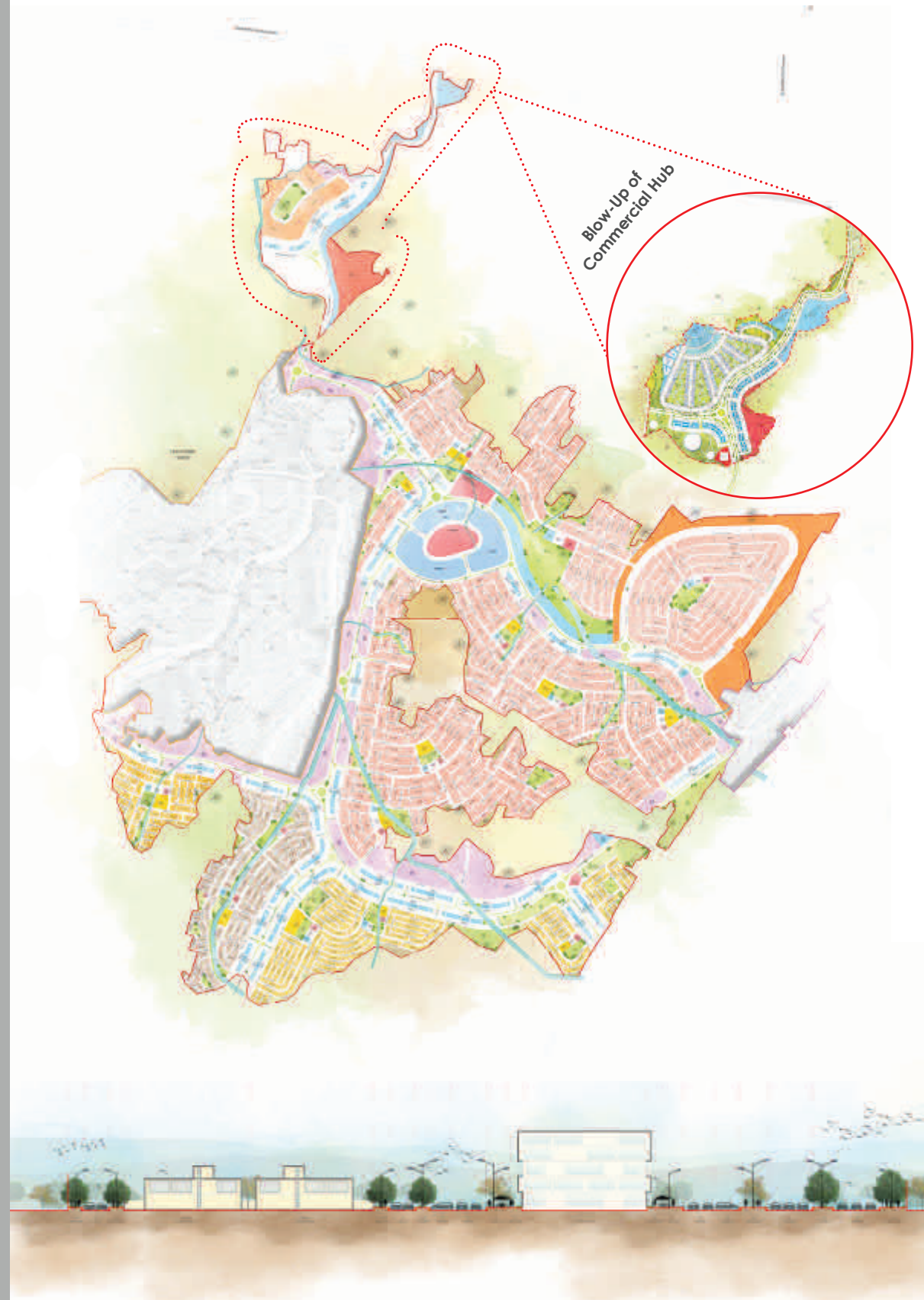


Urban Planning

Project Location Islamabad
Area 23,666 Kanals
Services Offered Soil Investigations, Hydrological Study, Site Analysis, Relief Analysis, Conceptual Planning, Zoning, Detailed Master Planning, Infrastructure Services Engineering Design Including Water Supply System, Sewerage System, Drainage System, External Electrification



DHA-III Islamabad



X-Section 40' Road



X-Section 60' Road

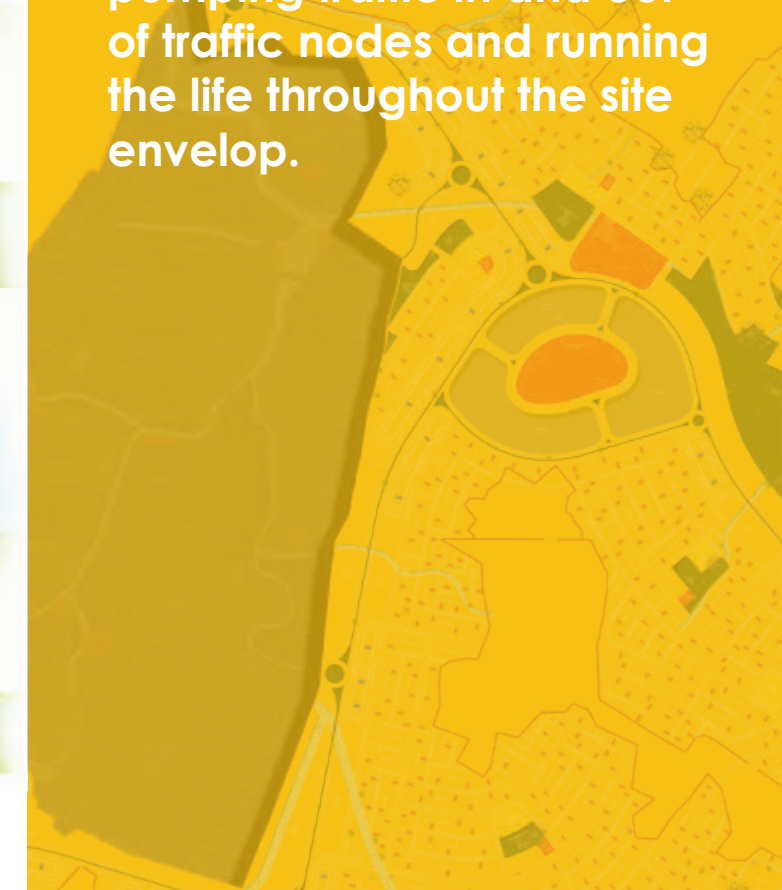


X-Section 80' Road

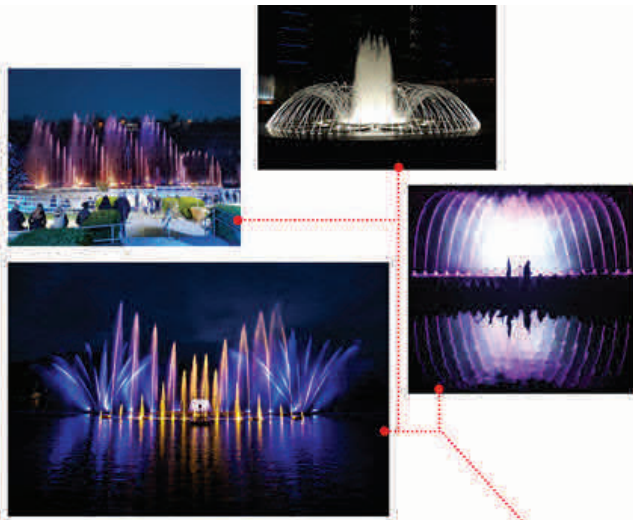


X-Section 120' Road

About the Project
 Urban Development can be seen as a completely evolved organism performing complex activities, all at one time. The functioning of an urban area depends on its road network. Thus the basic concept behind DHA is bringing life to the community, the main circulation takes the form of a beating Heart engulfing the whole project site. As the heart is responsible for regulating blood flow, the “Heart Shaped” Arterial Road in the envelop of DHA – III, is the life line of project/all development. The orange lines act as the Collectors in project, pumping traffic in and out of traffic nodes and running the life throughout the site envelop.







Water & Light Show



Central Interactive areas with Commercial



Commercial / Offices

DHA-III, Islamabad Commercial Hub

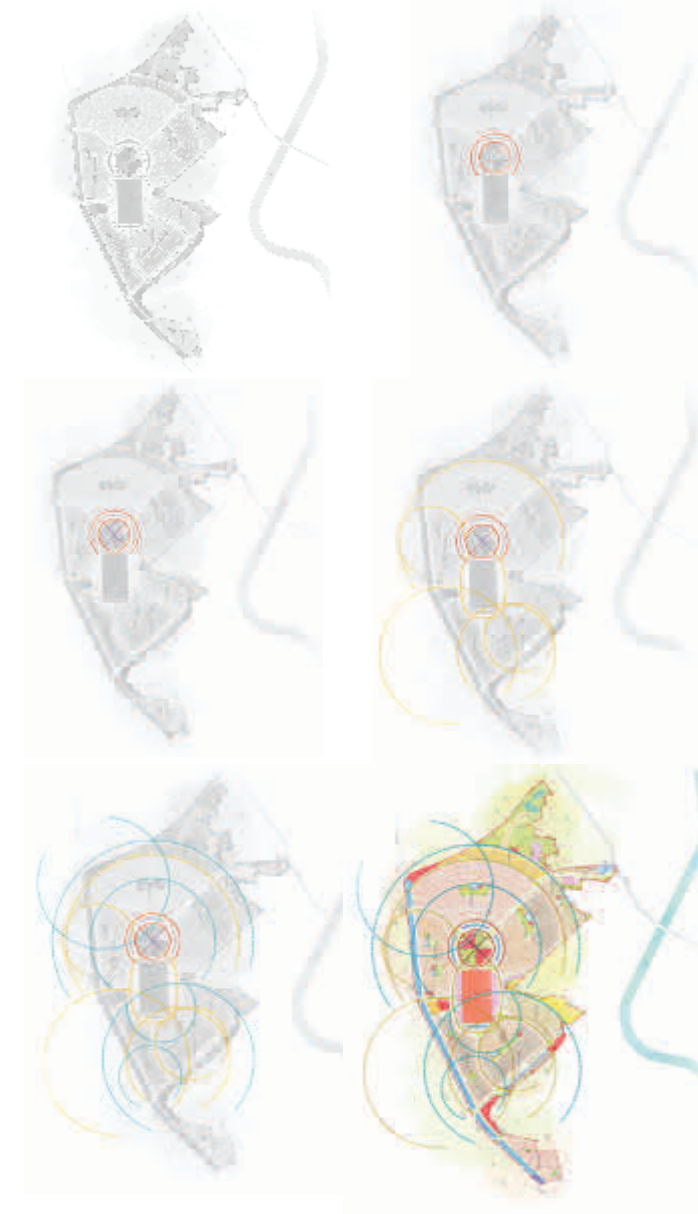


Project Location
Area
Services Offered

Kamra
9682 Kanals
Soil Investigations,
Hydrological Study, Site Analysis,
Relief Analysis, Conceptual
Planning, Zoning, Detailed Master
Planning, Infrastructure Services
Engineering Design Including Water
Supply System, Sewerage System, Drainage
System, External Electrification

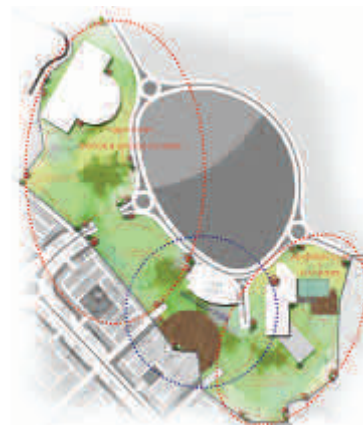


Design Concept

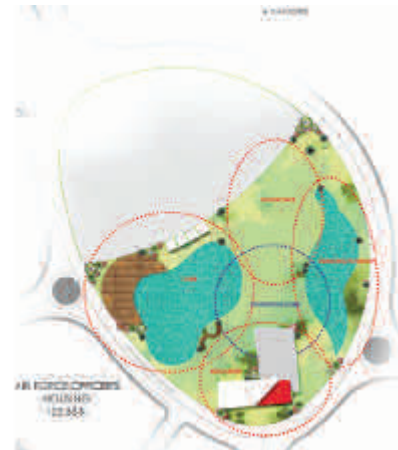


About the Project

The main concept of Aviation City revolves around the basic theme of providing this fancy destination, a rich experience with the camaraderie, comfort and facilities to live a full life out of uniform. The proposed layout enriches the sense of place while offering exceptional views and vistas. It augments economic stimulus, education, and most importantly – community pride. The project is not limited to volumes and façades, instead the quality of life of users and the quality of the environment generated is the design crux. A combination of loops and interconnected trunk traffic corridors define the basic structure of the plan. The circular city inspired a Radial Pattern of development. The Radial Pattern of development is found in all major eras from Egyptians, Mesopotamians, Persians leading all the way up till the 1900's industrial revolution. Over decades, The Radial Pattern was criticized for its non-functionality, limit of growth and wastage of land. The Grid Iron Pattern was developed and fused overtime with the Grid making the Fused Grid. The evolution of physical form of a city continued and Linear Pattern of street development were developed, it was fused with the grid. Respecting nature's physical form gave birth to Curvilinear Patterns of development, and focus on functionality and accessibility introduced Loops and Lollipops. This real estate venture also aims at providing a world class 18 Hole Golf Course, Club Houses and High Street Commercials. Higher order facilities like Central Park, Air Medical Complex, International Level University, Health Complex and recreational facilities are also aimed to be provided.



Theme Park



Water Park



Community Park

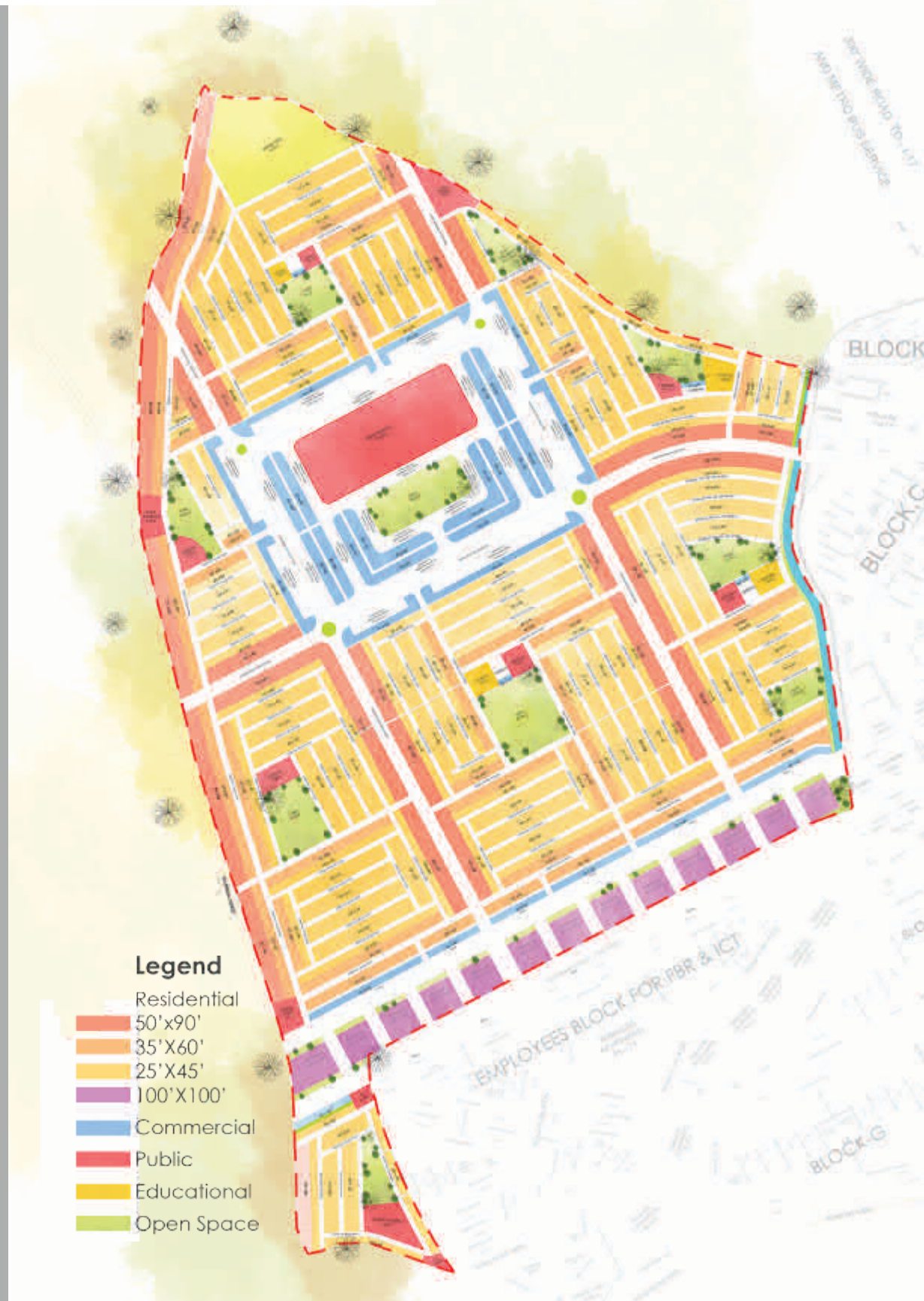




Project Location Islamabad
Area 3257.35 Kanals
Services Offered Soil Investigations, Hydrological Study, Site Analysis, Relief Analysis, Conceptual Planning, Zoning, Detailed Master Planning, Infrastructure Engineering Design Water Supply System, Sewerage System, Drainage System, Mixed Use Development



CBR Town, Phase-II, Islamabad



CBR Mosque, Islamabad



CBR Gate, Islamabad



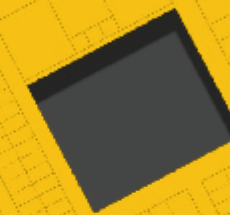
CBR Office Building, Islamabad



CBR Water Tank, Islamabad

About the Project

The overall concept is a garden living environment which shows the whole development was designed according to the natural characteristic of site condition. The undulation of the site will create an interesting phenomenon and provide excellent views within the entire site. The housing community is also laid out according to the terrain and existing landform. In addition, commercial and civic facilities are strategically located within the site designed.



Project Location F17, Islamabad
Area 1890 Kanals
Services Offered Soil Investigations, Hydrological Study, Site Analysis, Relief Analysis, Conceptual Planning, Zoning, Detailed Master Planning, Infrastructure Services Engineering Design Including Water Supply System, Sewerage System, Drainage System,



T&T Mosque, Islamabad



T&T Monument, Islamabad



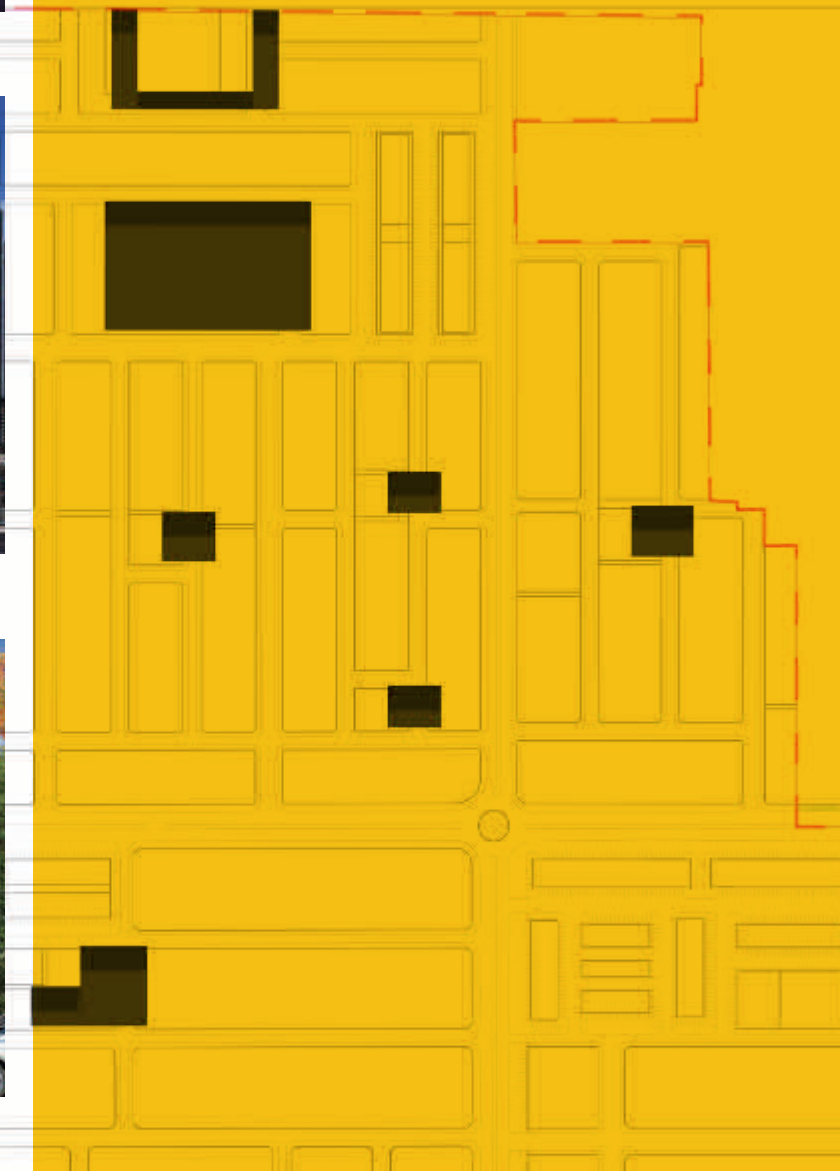
Overseas height apt, Islamabad



CBR Water Tank, Islamabad

About the Project

The Pattern of development of T&T ECHS, takes inspiration from the Grid pattern. The master plan enriches the sense of place while offering exceptional views and vistas. It augments economic stimulus, education, and most importantly community pride. The project is not limited to volumes and façades, instead the quality of life of users and the quality of the environment generated is the design crux.



T&T ECHS, Islamabad



Sector A



Sector B



Sector C

Project Location Chakri Road, Islamabad

Area 1008.47 Kanals

Services Offered Soil Investigations, Hydrological Study, Site Analysis, Relief Analysis, Conceptual Planning, Zoning, Detailed Master Planning, Infrastructure Services Engineering Design Including Water Supply System, Sewerage System, Drainage System, External Electrification



Al-Najaf-Orchards



Sector A



Sector B



Sector C



About the Project

Al-Najaf is a farm housing project proposed in the country side of Rawalpindi. Five minutes off the main Motorway, Al-Najaf offers a unique experience of urban services while enjoying the natural terrains of the Potohar Plateau. An extensively landscaped entry to the project creates interest which is coupled with mega commercial, exploiting the benefits making the estate sustainable. The driving experience takes you through lavish farm houses to a central round about offering a country club, riding club, a sports arena along with cinema complex and a central mosque. The estate is further divided into three blocks with open spaces, wide roads lines with street furniture offering beautiful villas.



AL- NAJAF

ORCHARDS



Project Location Islamabad

Area 690 Kanals

Services Offered Soil Investigations, Hydrological Study, Site Analysis, Relief Analysis, Conceptual Planning, Zoning, Detailed Master Planning, Infrastructure Engineering Design Including Water Supply System, Sewerage System, Drainage System, Urban Design, Monument, Landscape, Architectural design of houses.

REHMAN ENCLAVE, MONUMENT

About the Project
Located on Iqbal Road, Rehman Enclave is the next best destination of Islamabad. Focused on developing a quality lifestyle, Rehman Enclave is designed to make a community worth living & relax!





REHMAN ENCLAVE MULTIPLE HOUSES DESGNS

REHMAN ENCLAVE MULTIPLE HOUSES DESGNS

Project Location Tarnol, Islamabad

Area 1585.30 kanals

Services Offered Site Analysis, Relief Analysis, Conceptual Planning, Zoning, Detailed Master Planning, Infrastructure Engineering Design Including Water Supply System, Sewerage System, Drainage System.



Fazaiia Housing Society, Tarnol



About the Project

Fazaiia Housing Society, Tarnol, is a small residential project featuring 7 Marla to 1 Kanal plots. It offers a safe and serene environment to serving and retired forces employees, while providing neighborhood level facilities within the housing estate.

Project Location Kharian

Area 1628 Kanals

Services Offered Soil Investigations, Hydrological Study, Site Analysis, Relief Analysis, Conceptual Planning, Zoning, Detailed Master Planning, Infrastructure Services Engineering Design Including Water Supply System, Sewerage System, Drainage System.



Grand City, Kharian



About the Project

The whole concept focuses on the high quality living standards. Topography of the site is respected in a way that excessive cutting and filling is avoided in order to reduce the development cost. Roads are the main contributor to the development as most of the activities are directly linked with the roads. This particular master plan is proposed while keeping in view the importance of roads and the activities associated with them.

Project Location Gujar Khan

Area 513 Kanals

Services Offered Site Analysis, Relief Analysis, Conceptual Planning, Zoning, Detailed Master Planning, Infrastructure Engineering Design Including Water Supply System, Sewerage System, Drainage System.



Sector A

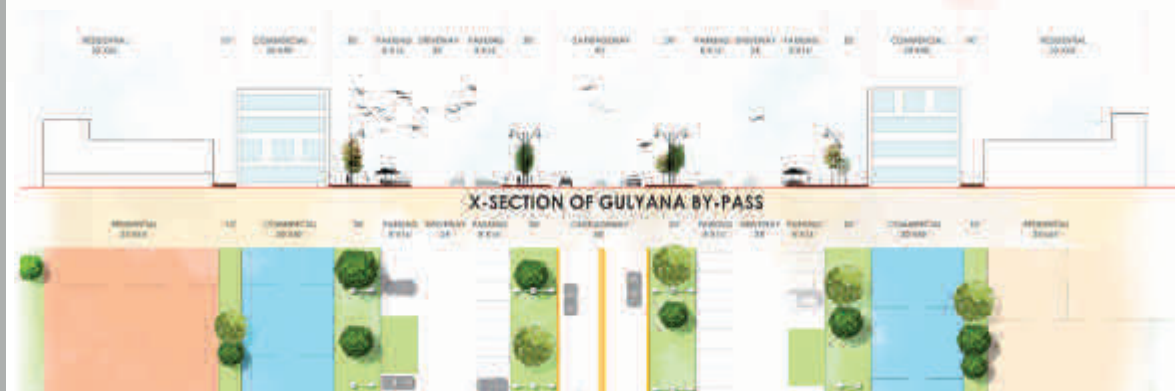


Sector B



Sector C

New Gujar Khan City



About the Project
The whole concept focuses on the good quality living standards. High density living embeds sustainability into the development practice while providing mixed use developments ensuring functionality and comfort at the same time.



Project Location Islamabad

Area 596 Kanals

Services Offered Soil Investigations, Hydrological Study, Site Analysis, Relief Analysis, Conceptual Planning, Zoning, Detailed Master Planning, Infrastructure Engineering Design Including Water Supply System, Sewerage System, Drainage System, Urban Design, Monument, Landscape, Architectural design of houses.

SITE LOCATION

About the Project

The whole concept focuses on the linear Grid pattern, which ensures that in every aspect, the design, placement of key buildings, landscaping, urban design and earthworks, specific care and sensitivity is applied to ensure that natural landform, topography, waterways, native fauna and key features of the site, are enhanced. It provides a choice of quality housing in integrated communities with close proximity to commercial, school, parks, mosques, community center and other amenities.

Islamabad Model Town



Project Location	Sargodha
Area	1758 Kanals
Services Offered	Soil Investigations, Hydrological Study, Site Analysis, Relief Analysis, Conceptual Planning, Zoning, Detailed Master Planning, Infrastructure Services Engineering Design Including Water Supply System, Sewerage System, Drainage System.



Shaheen Enclave, Sargodha



LEGEND

RESIDENTIAL	
	25'X50'
	30'X60'
	35'X70'
	40'X80'
	50'X90'
	RESERVED RESIDENTIAL
	COMMERCIAL
	PUBLIC BUILDINGS
	GRAVEYARD
	OPEN AREAS



Sector A



Sector B



Sector C

About the Project
 The Pattern of development of Shaheen Enclave, is a curvilinear grid pattern. Respecting nature's physical form gave birth to Curvilinear Patterns of development, and focus on functionality and accessibility introduced Loops and Lollipops. A combination of loops and interconnected trunk traffic corridors define the basic structure of the plan.

SHAHEEN ENCLAVE GATE & LANDSCAPE DESIGN



Project Location Islamabad

Area 1128 Kanals

Services Offered Master Planning, Detailed Infrastructural Design including Road works, Water Supply System, Sewerage System, Drainage System.



Parliamentarian Enclave, Islamabad



About the Project

This particular master plan is proposed while keeping in view the importance of roads and the activities associated with them. A hierarchy of roads can be seen throughout the plan. Linear commercialization is provided. The commercial plots are surrounded by wide roads including green belt, walk ways, services corridor and parking facility as well. The purpose of linear commercialization is to channelize the traffic load. Site for apartment buildings is reserved and commercial zone exists at very immediate location to the apartments.

Design

Urban



Urban

Design

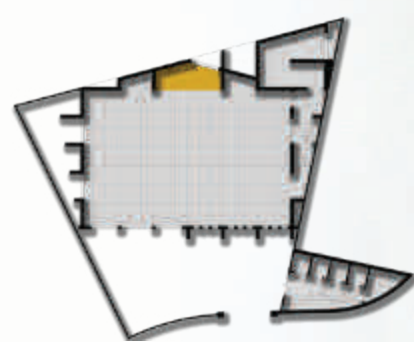
Project Location Rehman Residentia, Islamabad

Area 2662 Sft.

Services Offered Architecture Design, Structure Design, Services Design including Plumbing, Electrical and HVAC/Mechanical, Interior Design

RR Mosque, Islamabad

"The mosque stands in a new housing development "**Rehman Residentia**". The concept behind this modern structure is **minimalism**. The idea was to bring forth a design that showed **the beauty of the building without adding too much details**. The slab of the mosque subtly transforms into the minaret."



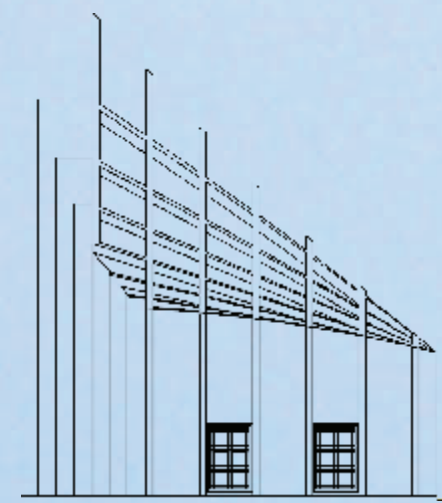
Ground Floor Plan



Mezzanine Floor Plan



Front Elevation



Side Elevation

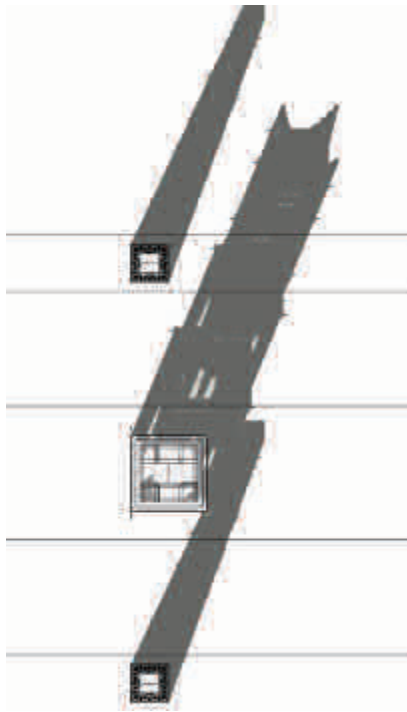


Project Location Rehman Residentia, Islamabad

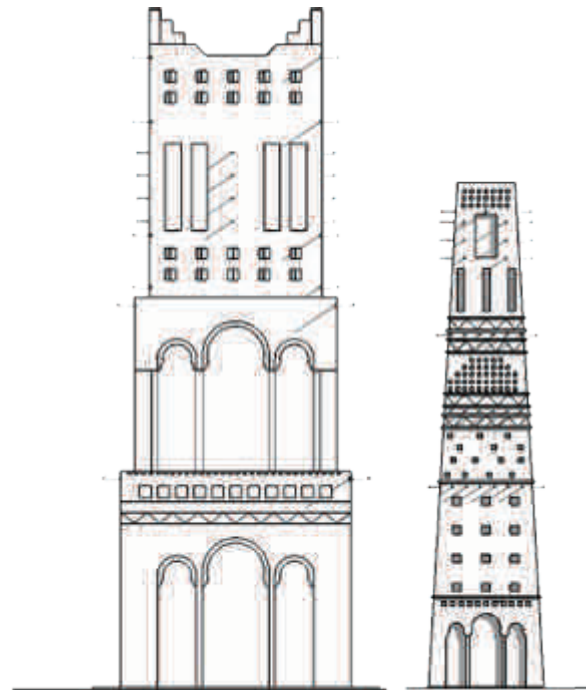
Services Offered Architecture Design & Structure Design

Morrocan Gate, Islamabad

“The gate of **Rehman Residentia** is an amalgamation of **Morrocon style of architecture** and the famous Djene mosque. The towers are **48 ft tall** and can be seen from far away. This makes the housing society stand out and provides a source of attraction to the public.”



Top View



Front View

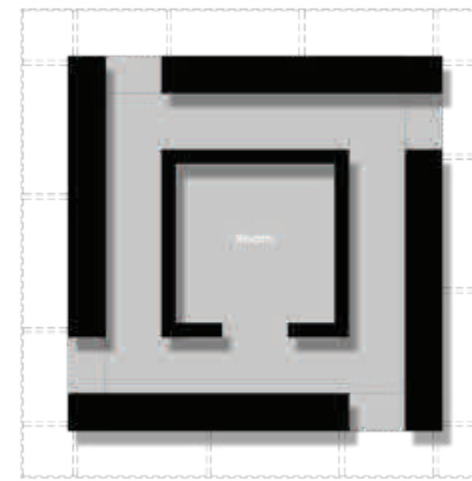


Project Location Gujar Khan

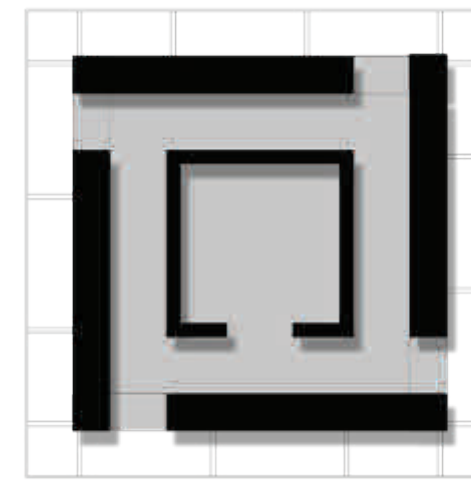
Services Offered Architecture Design & Structure Design

GUJAR KHAN CITY GATE

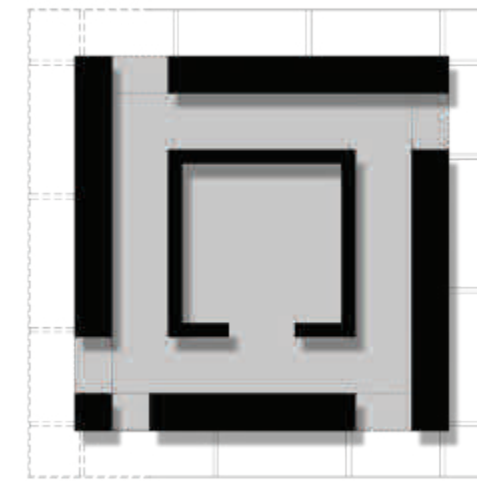
"The idea behind this structure was a **Watch tower**. The tower soars at **100,ft** height overlooking the society. It provides a viewing point and can be spotted from quite a distance. The central part of the tower is made of a mesh of steel that can be used for advertisements."



Plan at 5'-0"



Plan at 46'



Plan at 75'

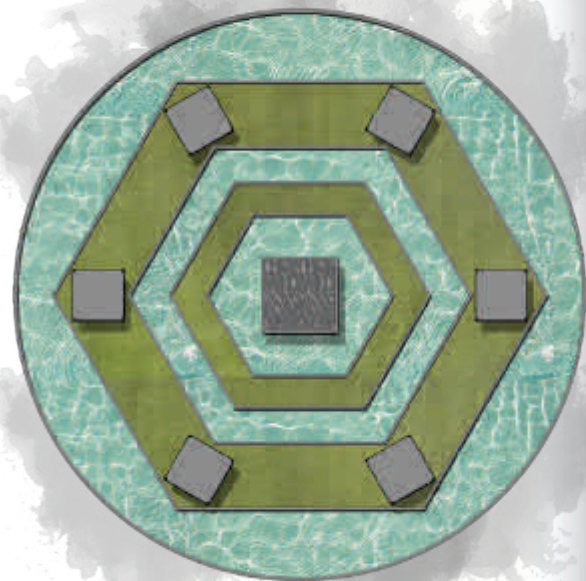


Project Location TNT Housing Society, Islamabad
Services Offered Architecture Design & Structure Design

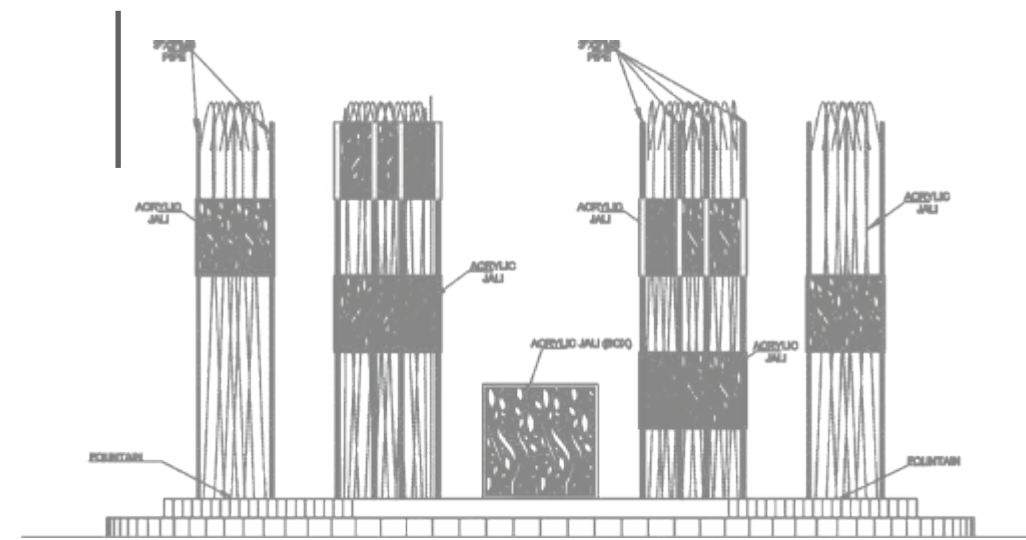
Monument, T&T

“Based on the **shape of hexagon**, this monument represents the **ever-growing development of the TnT housing society**.

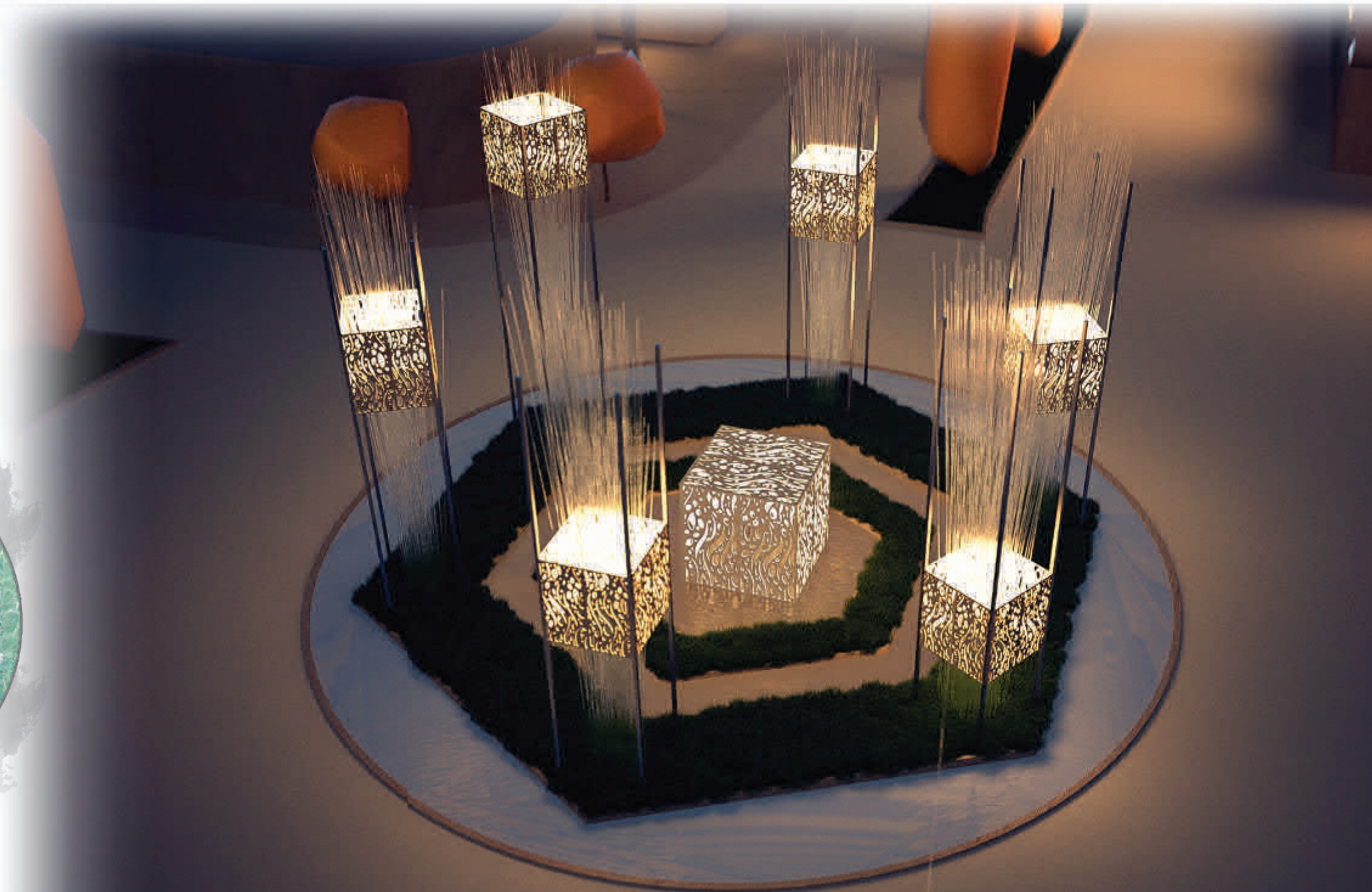
This monument was designed in **relation to the grand mosque** of the housing society. **Play of light and water adds a dramatic effect** to the overall design of the monument.”



Top View



Front View



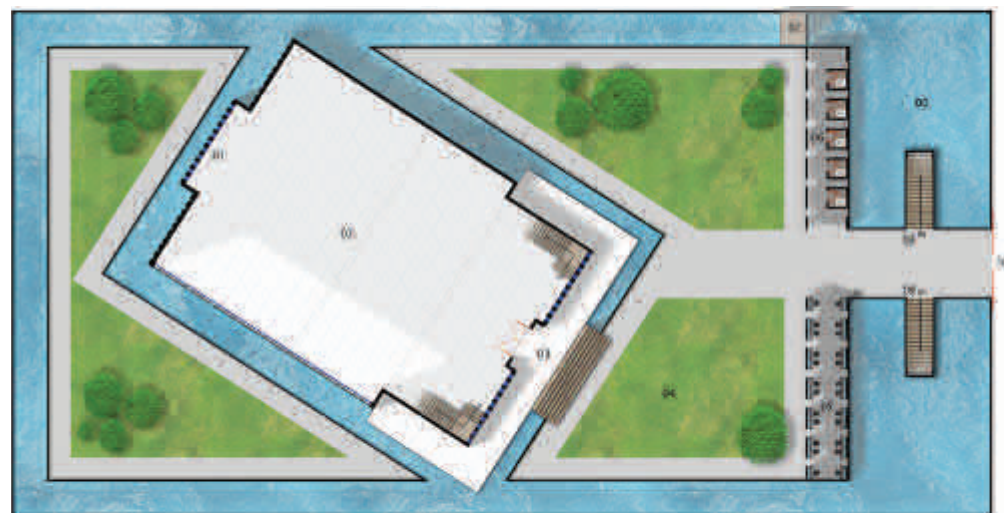
Project Location TNT Housing Society, Islamabad

Area 16,708 Sq. ft

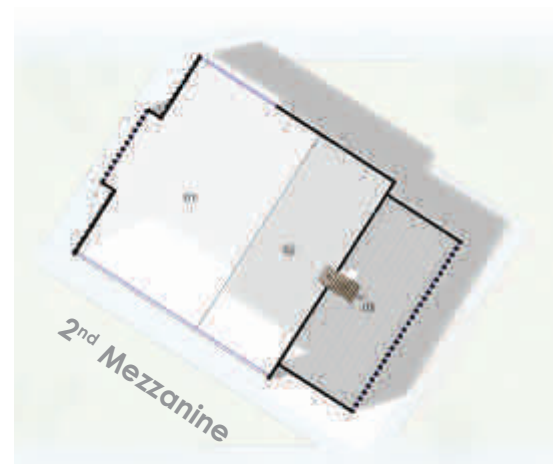
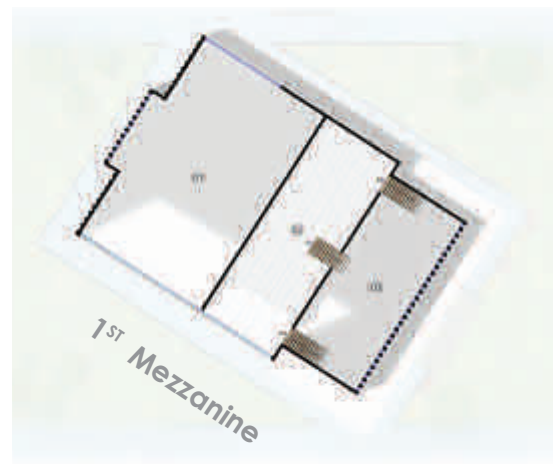
Services Offered Architecture Design, Structure Design, Services Design including Plumbing, Electrical and HVAC/Mechanical, Interior Design

TNT Mosque, Islamabad

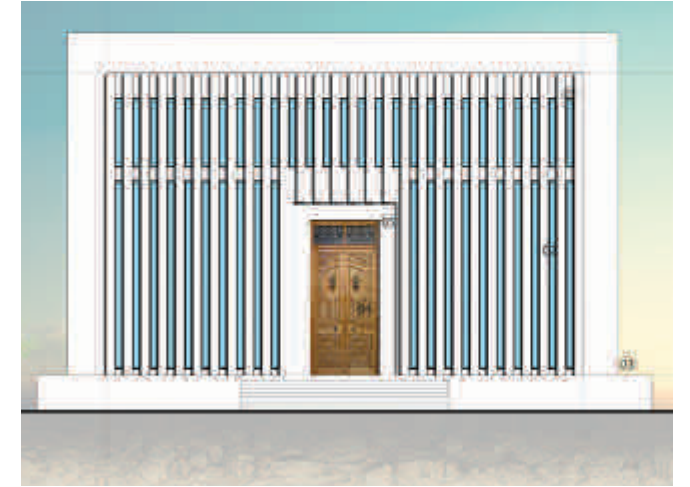
“Surrounded by **still water**, the **building stands tall between lush green trees**. The design of the building is based on a **combination of a square and a rectangle**. **Play of light and shadows** is the main focus in this design. Interesting light play can be captured inside the mosque throughout the day.”



Ground Floor Plan



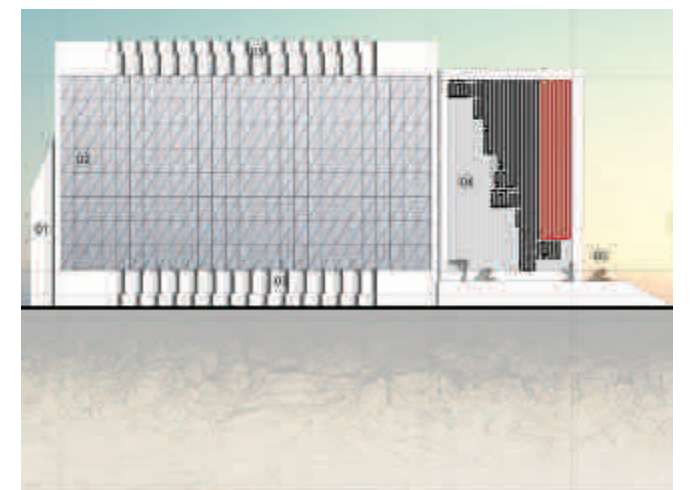
West Side Elevation



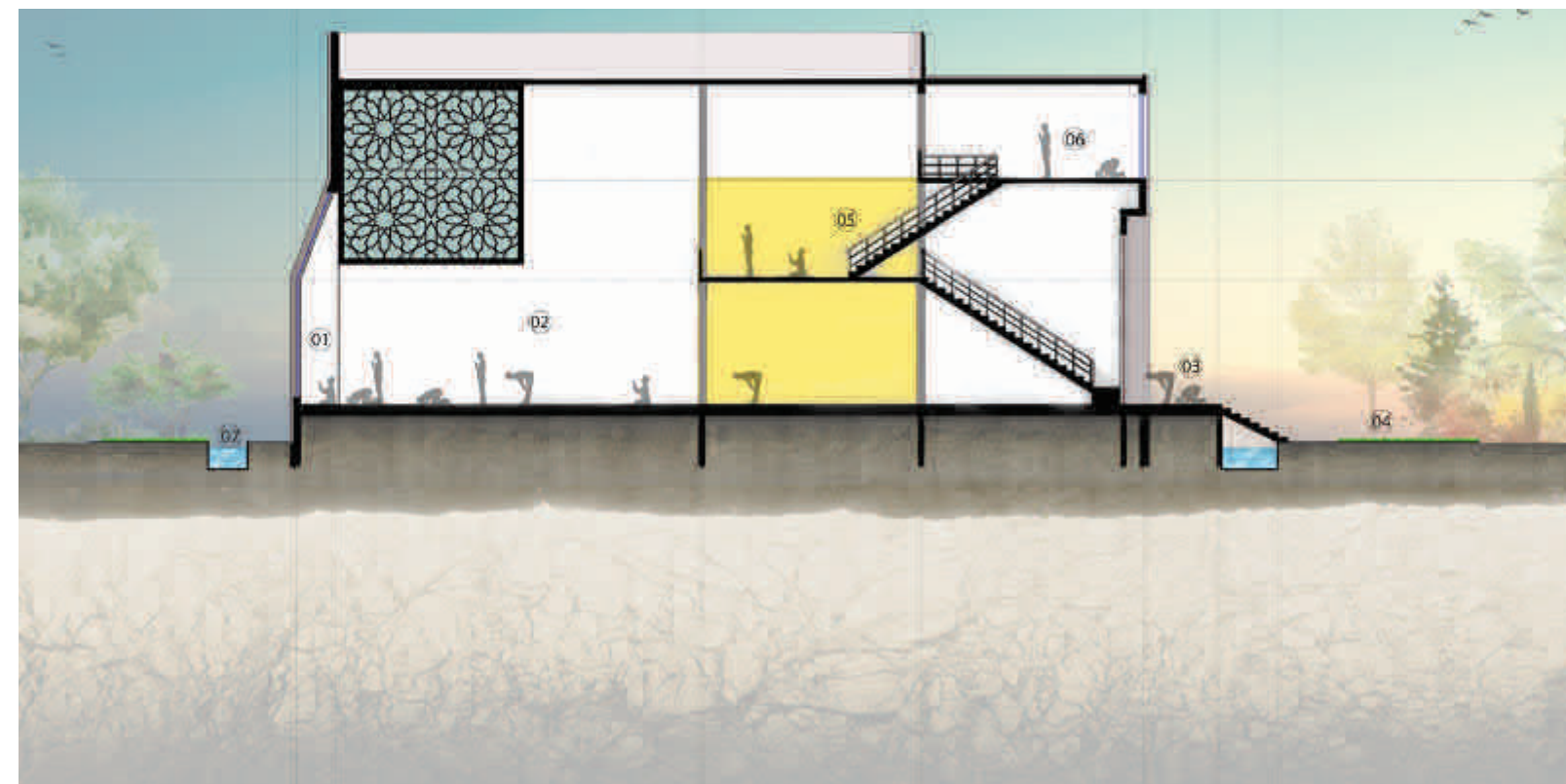
East Side Elevation

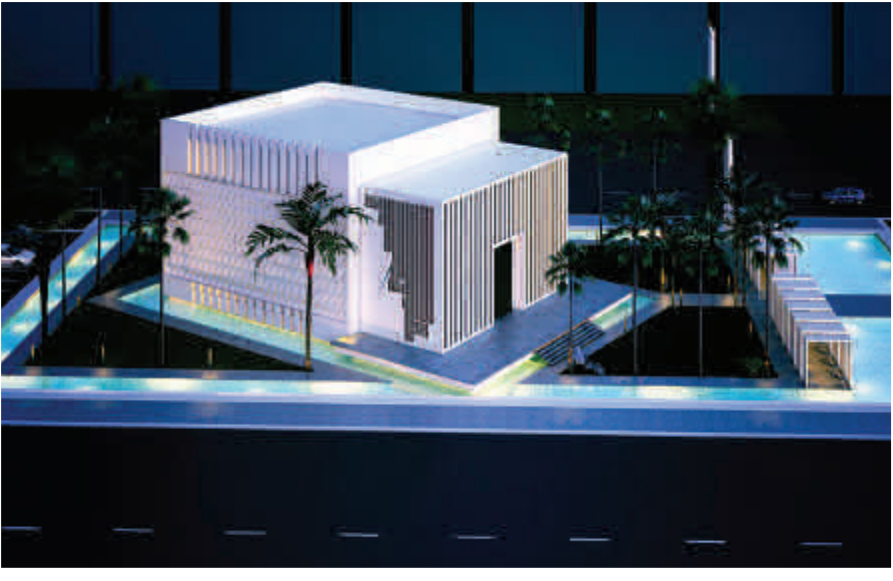


North Side Elevation



South Side Elevation





Project Location Rehman Enclave, Islamabad
Services Offered Architecture Design & Structure Design

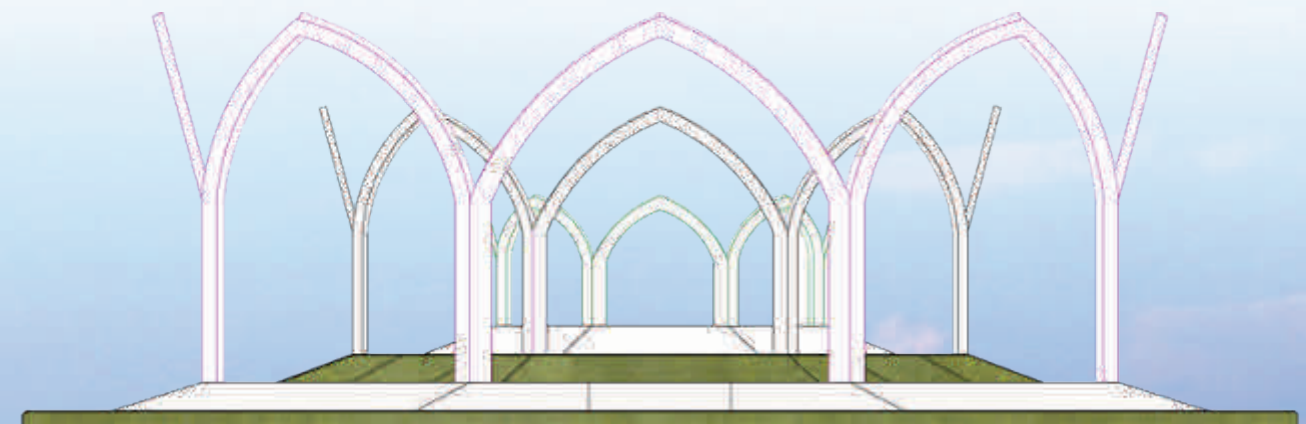
Monument, Islamabad

“Monument of **Rehman Enclave** reflects the **serenity and balance** provided in the residential living of the community from seen atop it presents the **petals of a flower blossoming** with the fresh environs it is placed in.”

Plan at 5'-0"

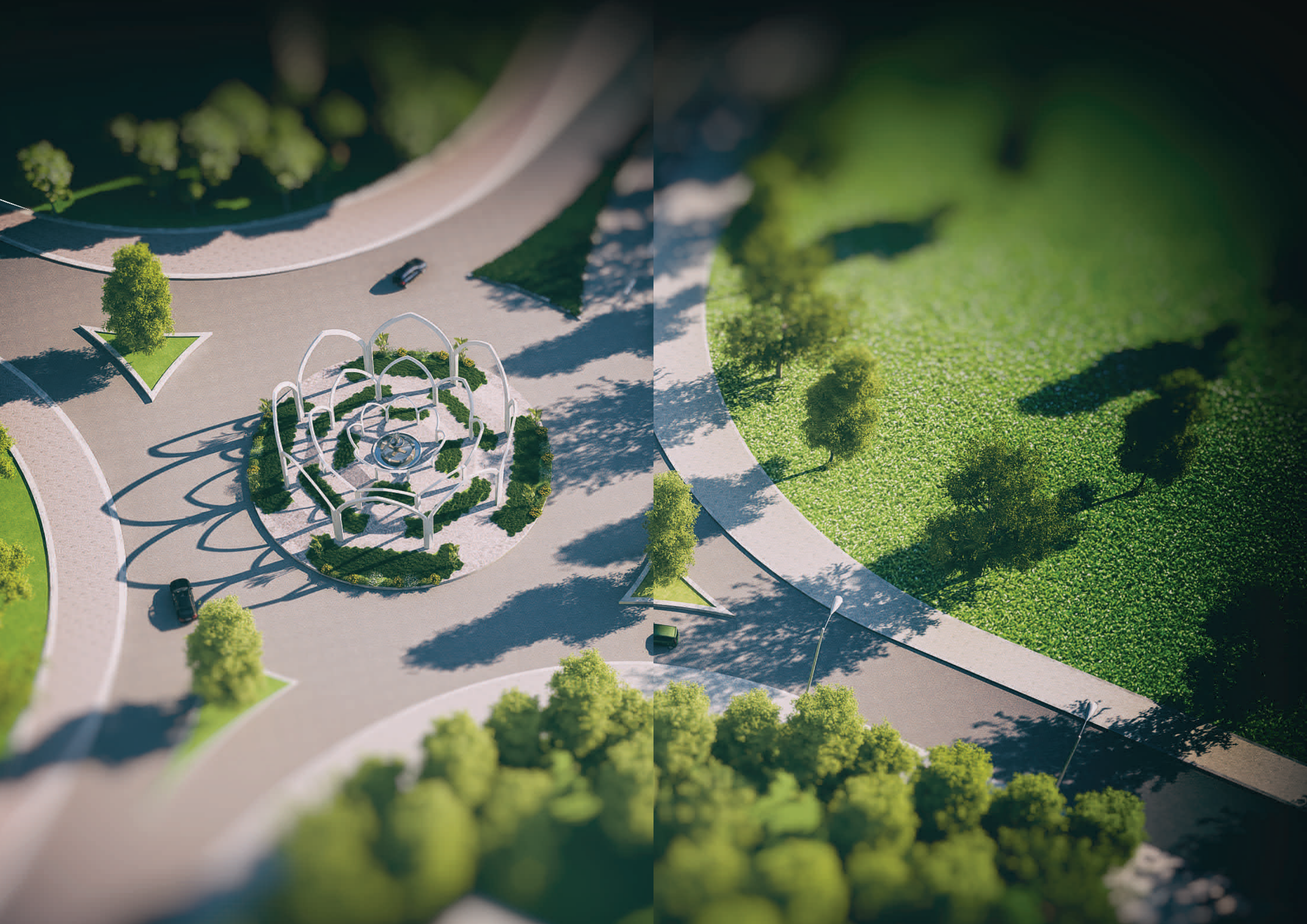


Plan at 30'-0"



Elevation





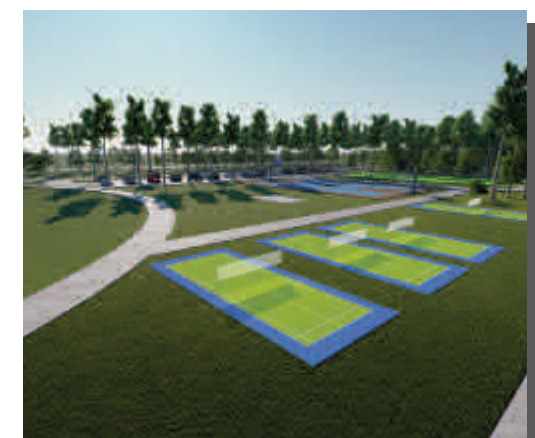
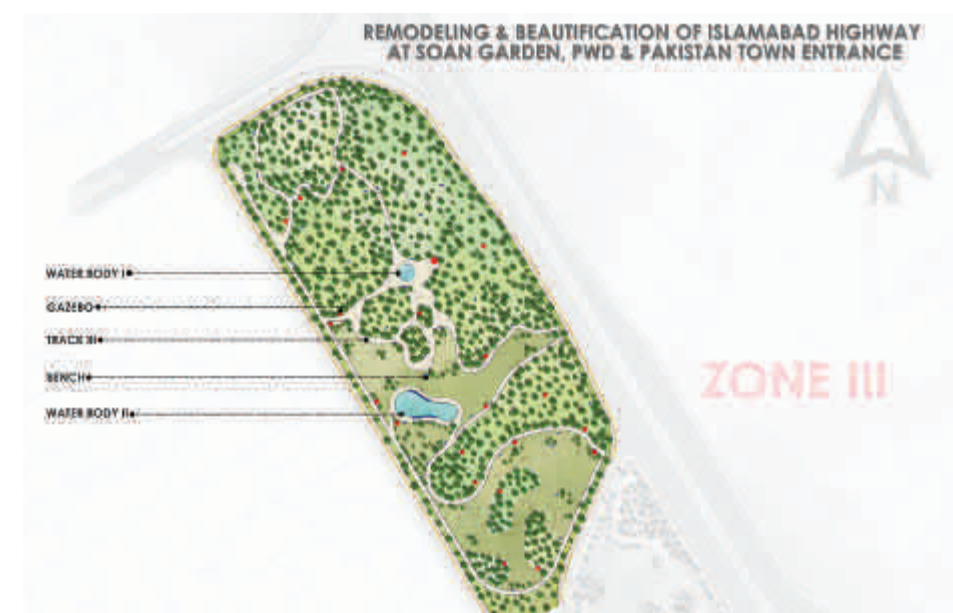
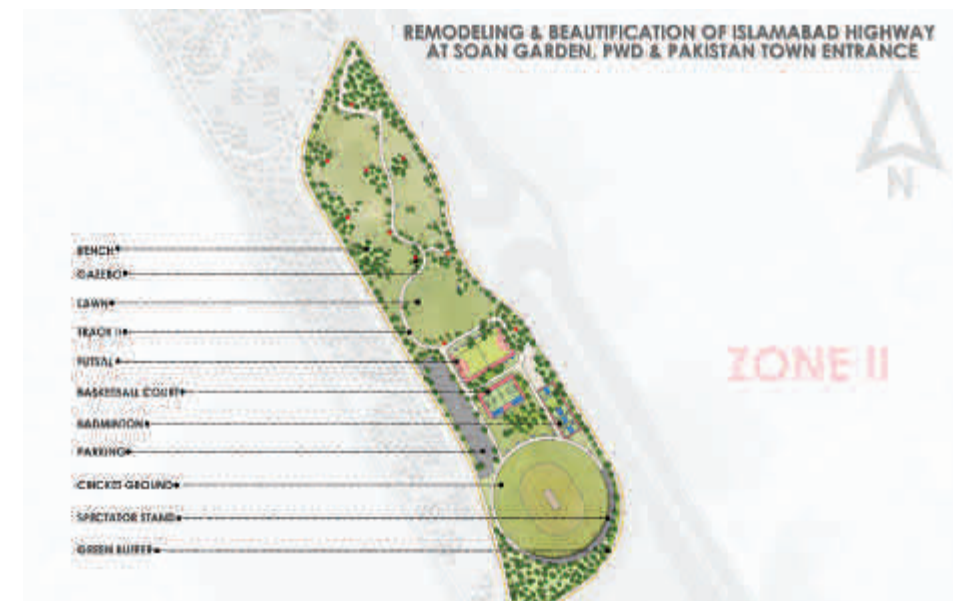
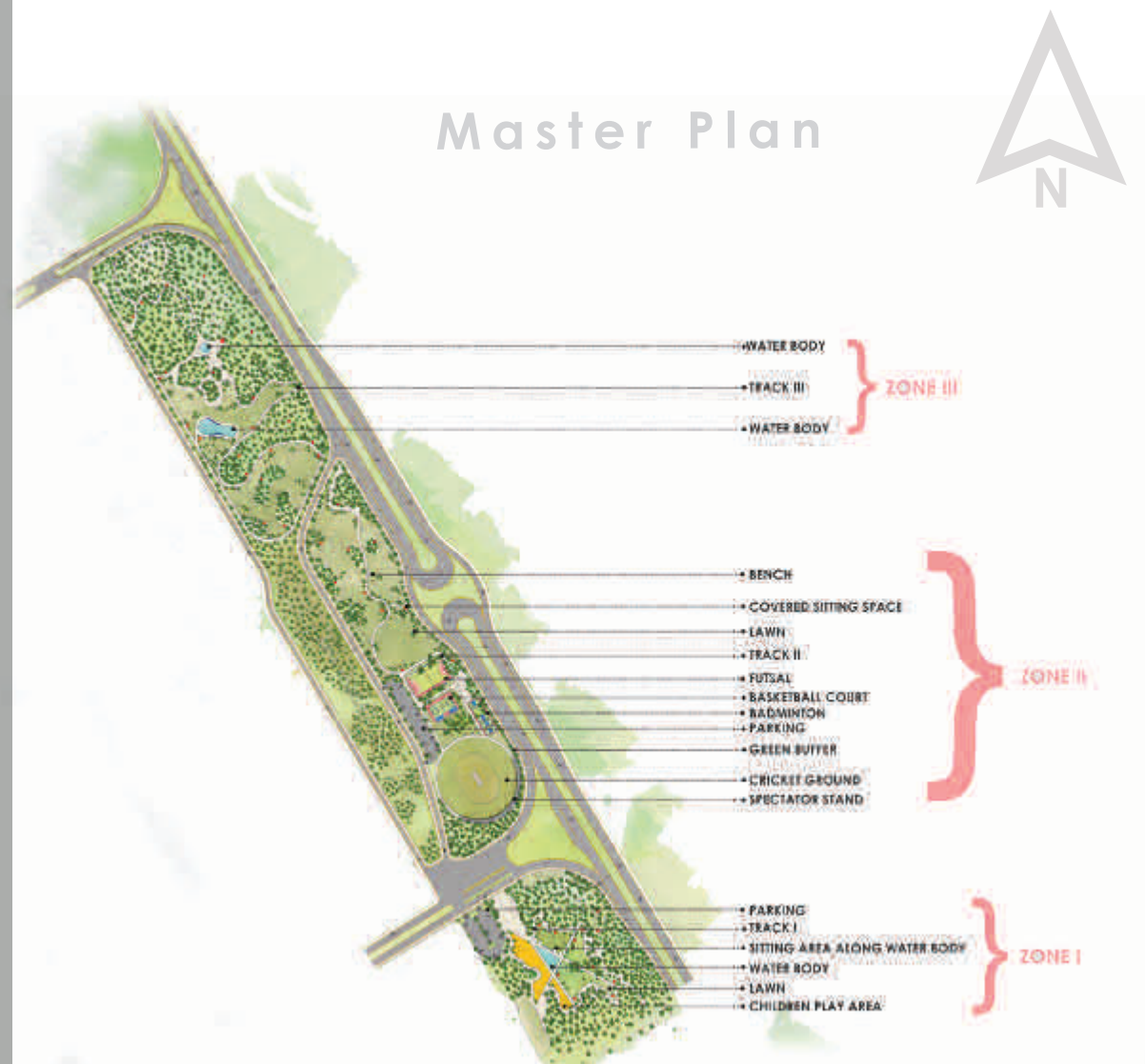
Project Location Zone V, Islamabad

Services Offered Master Planning, Landscape Designing, Detailed Layout, Transportation Planing, Remodeling & Beautification of Islamabad Expressway.

About the Project

Remodelling & beautification of islamabad highway at Soan Garden, PWD & Pakistan Town entrance. Urban & road network planing and landscape design.

Islamabad Expressway



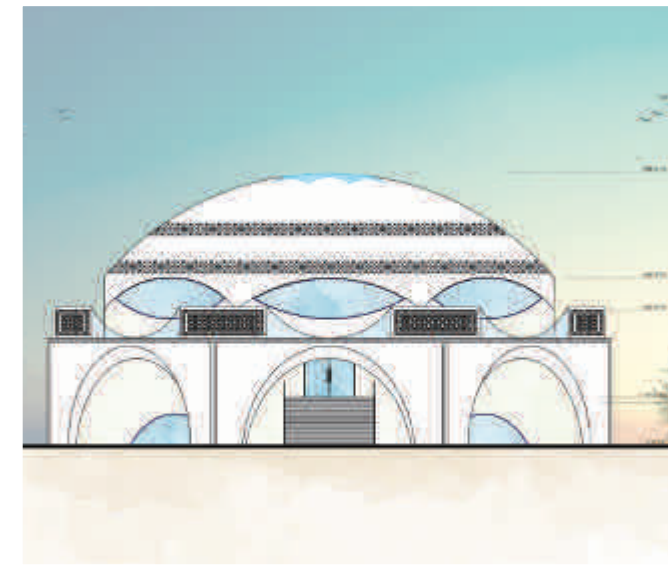
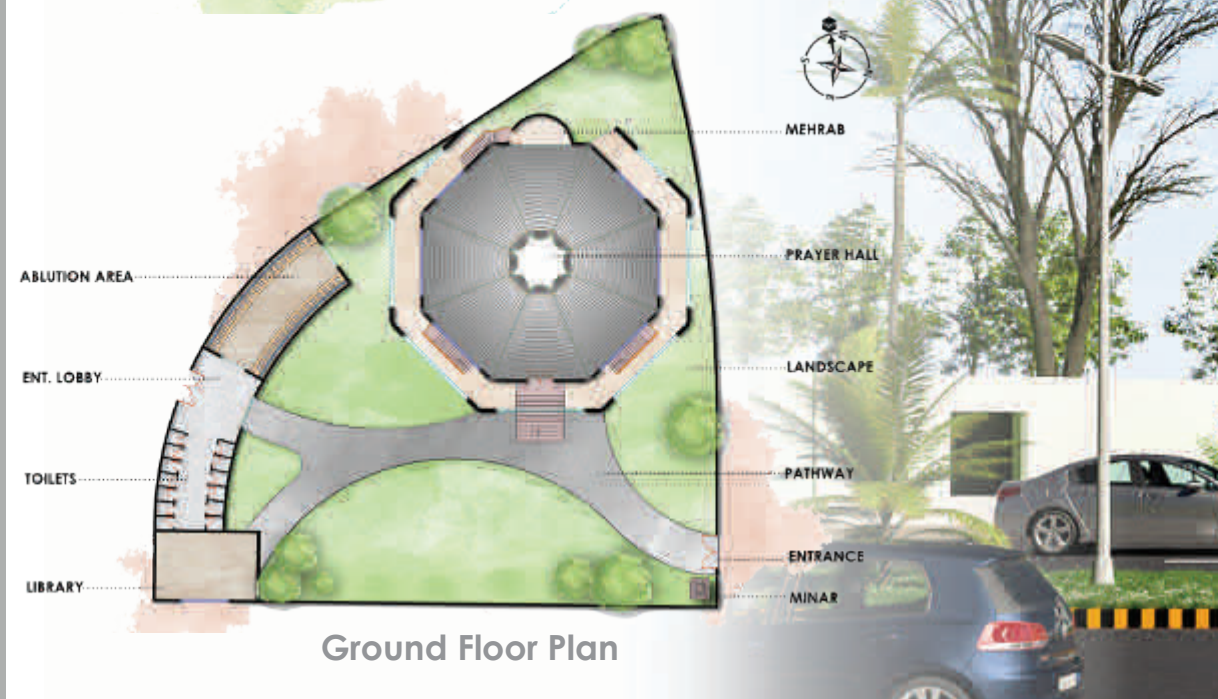
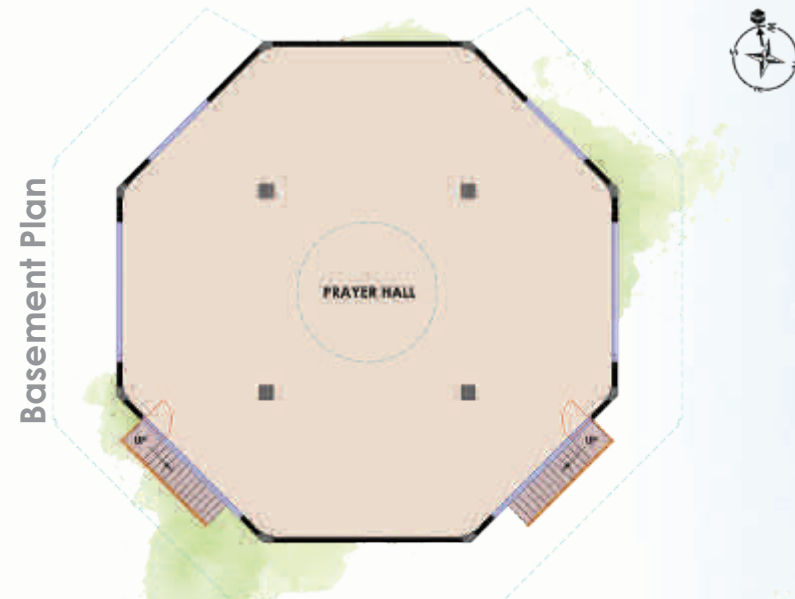
Project Location CBR, Islamabad

Area 13,732 Sq. ft

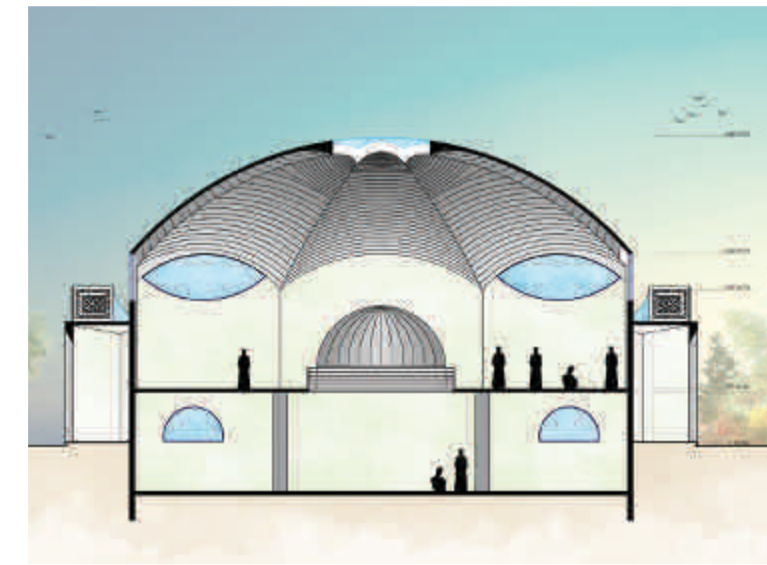
Services Offered Architecture Design, Structure Design,
Services Design including Plumbing,
Electrical and HVAC/Mechanical,
Interior Design

CBR Mosque, Islamabad

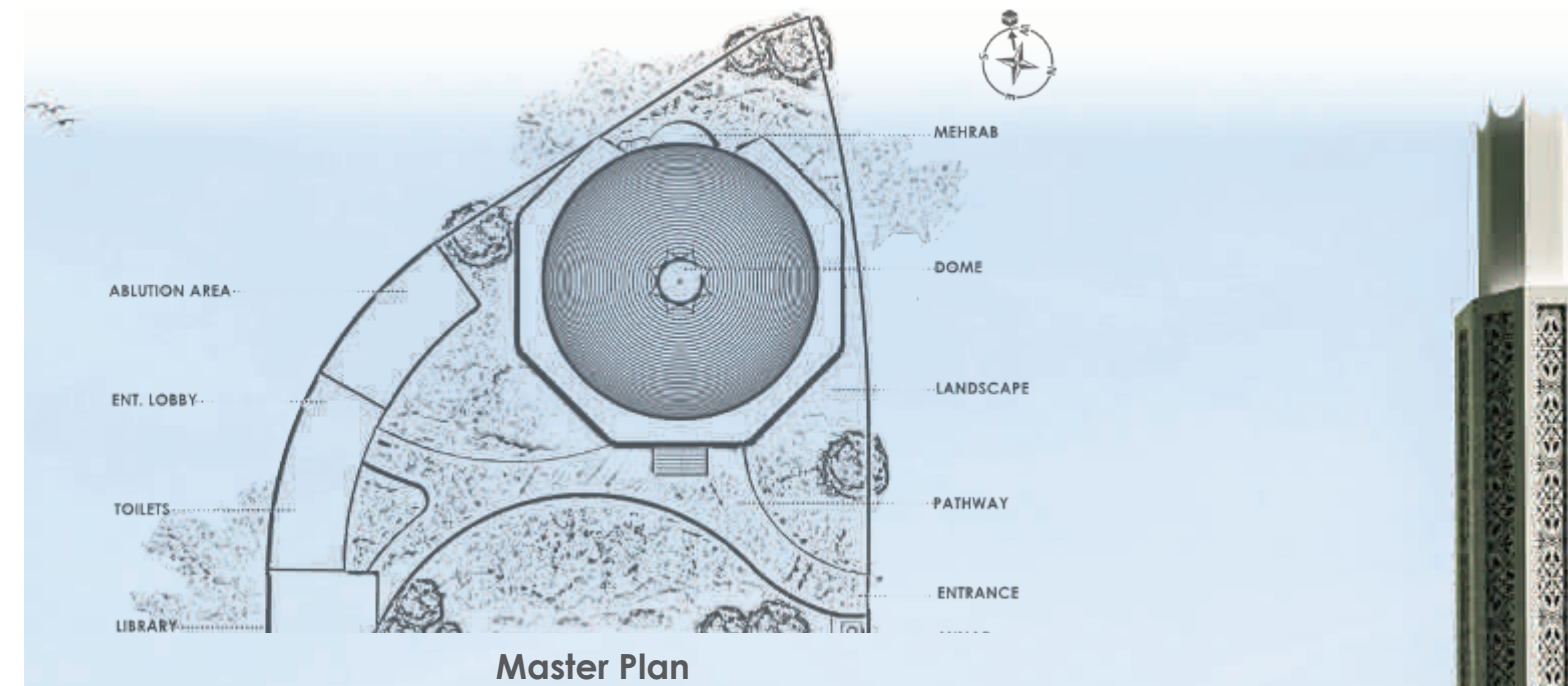
"CBR Central Mosque with its **detached entrance** and ablution areas, landscaped lawns and fantastic facade is a **state of the art Mosque**. It is aimed to sense the community in **obseeing religious practices.**"



Elevation



Section



Master Plan

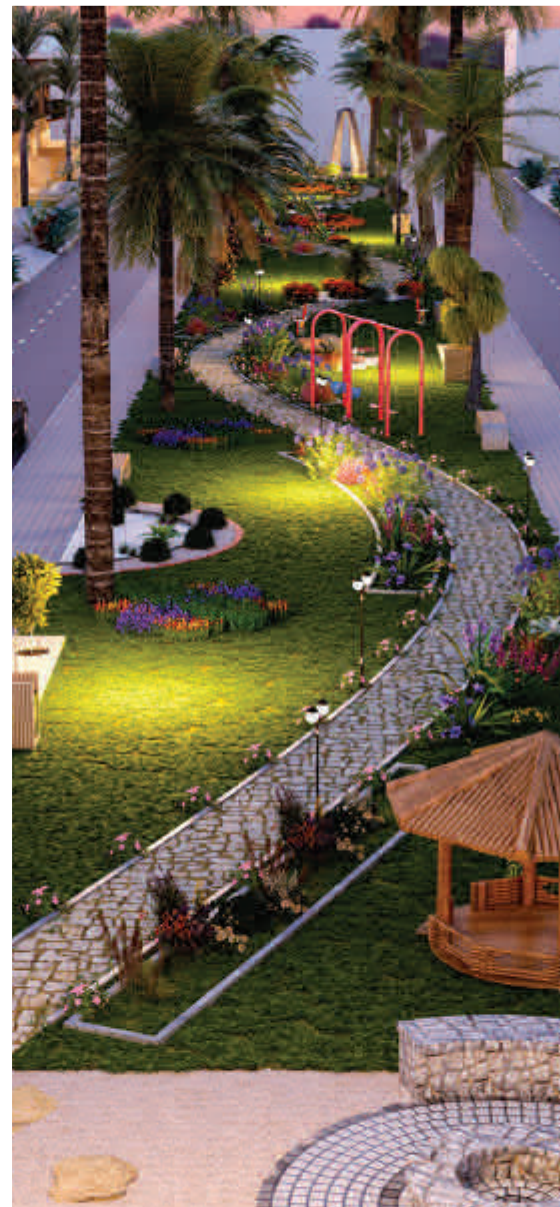
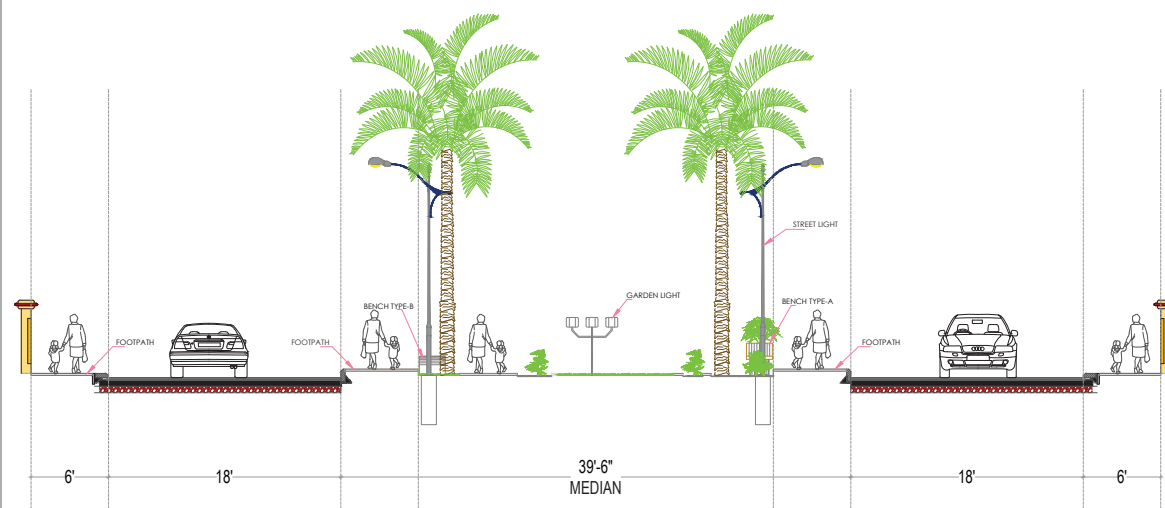
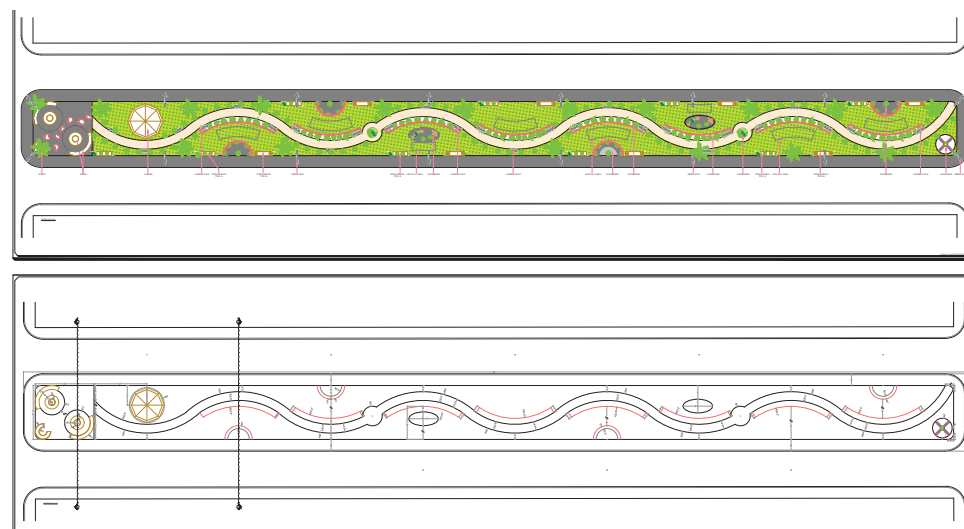


Project Location Sufi City, Mandi-Bahauddin

Services Offered Architecture Design, Structure Design,
Services Design including Plumbing,
Electrical and HVAC/Mechanical,
Interior Design

Linear Park, Sufi city

“Linear Park at Sufi City tells the tale of **Planning Public spaces** for community, so they can enjoy, relax and recreate within their communities. It is an **interactive public space** serving with utmost satisfaction.”

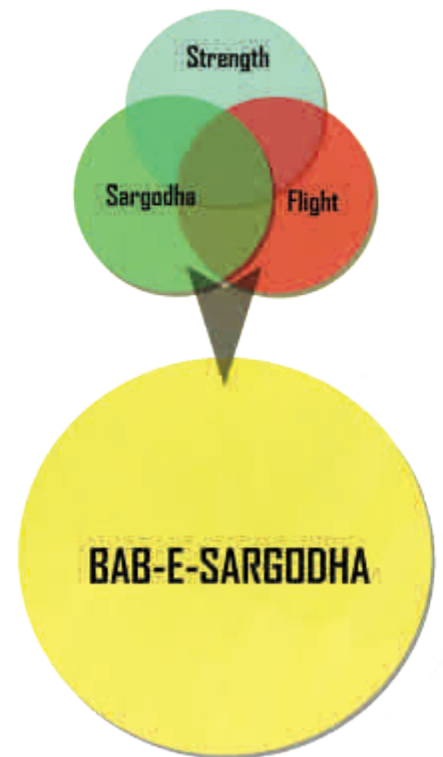


Project Location Sargodha

Services Offered Architecture Design, Structure Design

Sargodha Toll Plaza, Sargodha

“A combination of strength & flight
Bab-e-Sargodha,
is the emblem for
the **city of Falcons**,
“**Sargodha**”. It is
built at the
entrance to
sargodha city on
lahore sargodha
road.”



Design

Architecture

Architecture

Design

Project Location Business District, Phase-VIII,
Bahria Town

Area 2,17,645.00 Sq. ft

Services Offered Architecture Design, Structure
Design, Services Design including
Plumbing, Electrical and
HVAC/Mechanical,
Interior Design



Mid Town

“ With numerous apartments, 1 pent house at the top and offices.

Mid Town is designed with modern touch and open balconies. Parking facility is provided in the basements to accommodate the flux of cars. Commercial shops are provided on lower ground floor, ground floor and first floors levels. Second to third floor levels offer One-Bed and Two-Bed Apartments. A mix of retail and residences; design is guided by Floor Area Ratios, Land Coverage, height restrictions, basement and amenities provision requirements as put forth by regulatory authority.”



Project Location Business District, Phase-VIII,
Bahria Town

Area 68,188.00 Sq. ft

Services Offered Architecture Design, Structure
Design, Services Design including
Plumbing, Electrical and
HVAC/Mechanical,
Interior Design



Hash Residency

Situated in the heart of bahria business district, Hash residency is luxury residential destination with a unique blend of compatible mixed-use features, Hash residency hosts famous retail lines/stores to comfortable living. Its post modernistic facades roof top swimming pool and garden & energy efficient building features make it one of the most distinctive places to live & enjoy!





Project Location Business District, Phase-VIII,
Bahria Town

Area 55546.30 Sq. ft

Services Offered Architecture Design,
Structure Design, Services
Design including
Plumbing, Electrical and
HVAC/Mechanical,
Interior Design



ASCON Heights

“ASCON Heights, a mixed-use building, capturing the essence of business environs of Bahria District, Bahria Town. Featuring a mix of uses, ASCON design concept presents a new typology for retail, work space and living destination. The classical elements of façade with geometrical details merge in technical modernity, transforming elegance into user friendly indoor spaces. We have functionally designed this mixed-use venture by allocating lower and ground floors to retail outlets comprising international/local brands. The first level brings life to sophisticated office environs for thriving business ventures. Taking mixed-use living to a life style destination of fine residential experience levels two to seven have been designed featuring exquisite apartments for enriched living experience. The building is equipped with well-designed building services, person and cargo lifts, garbage chute and dedicate emergency exit stair case.”



Project Location Bahria Paradise Phase-VI, Bahria Town

Area 139,059 Sq. ft

Services Offered Architecture Design,
Structure Design, Services
Design including Plumbing
Electrical and HVAC
/Mechanical, Interior Design



Galaxy Heights

Galaxy Heights is placed uniquely at the entrance of Phase-VI of Bahria Town, destined to become a part of Bahria Paradise skyline along Soan River. Its unique placement offers access from all sides, creating four-sided entrance/front elevation impact. Main Entrance foyer is lit with skylight throughout the height of building taking fancy lifts and stairs along. Commercial shops are provided on lower ground floor, ground floor and first floors levels. Second to third floor levels offer One-Bed and Two-Bed Apartments. A mix of retail and residences; design is guided by Floor Area Ratios, Land Coverage, height restrictions, basement and amenities provision requirements as put forth by regulatory authority.



Project Location Business District, Phase-VIII,
Bahria Town

Area 50379.24 Sq. ft

Services Offered Architecture Design,
Structure Design, Services
Design including Plumbing,
Electrical and HVAC
/Mechanical, Interior Design



Onyx Tower

Onyx tower is an **architectural landmark**. Its classical façade is a harmonious mass of intricate gothic architectural details. Just as striking interior as outside with its beautiful sculpture, the building is a marvel in itself. A of retail and residences, the building is equipped with well designed building services, person and cargo lifts, garbage chutes and dedicated energy cases.



Project Location Business District, Phase-VIII,
Bahria Town

Area 355,794.67 Sq. ft

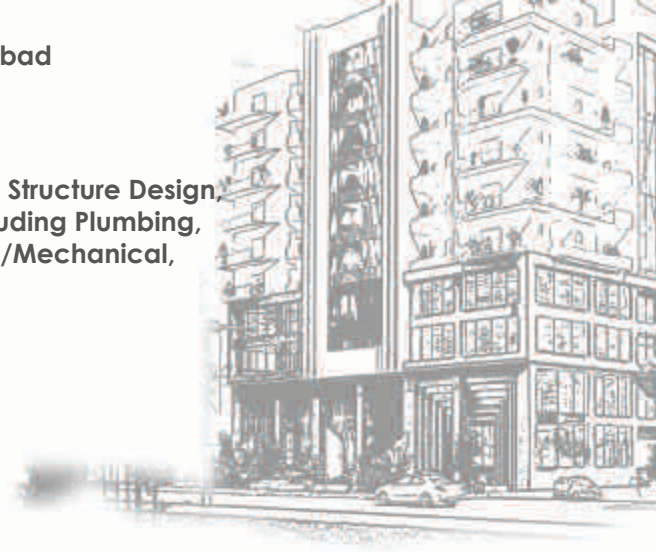
Services Offered Architecture Design,
Structure Design, Services
Design including Plumbing,
Electrical and HVAC
/Mechanical, Interior Design



Project Location Ghauri Town, Islamabad

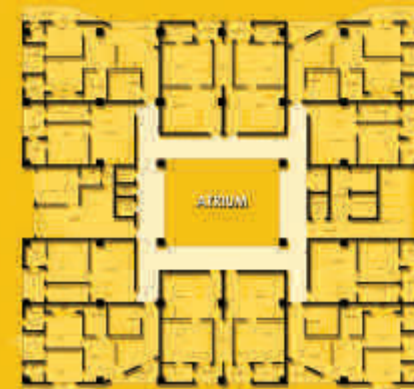
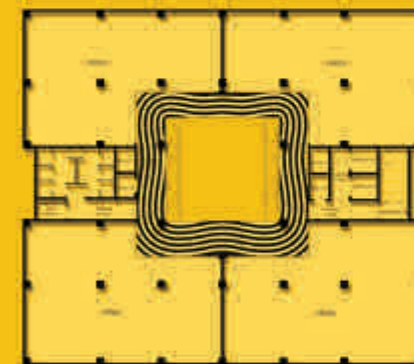
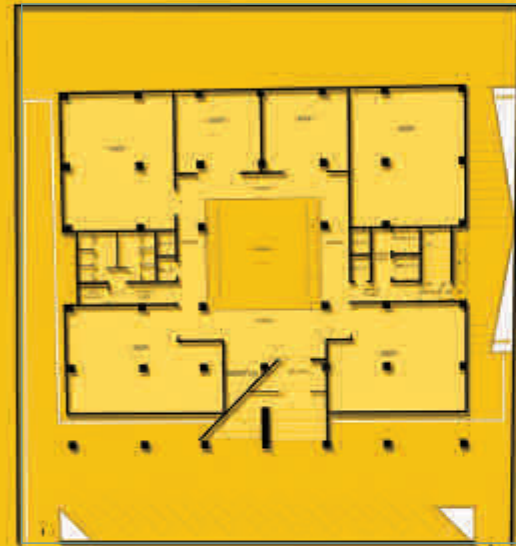
Area 128,835 Sq. ft

Services Offered Architecture Design, Structure Design, Services Design including Plumbing, Electrical and HVAC/Mechanical, Interior Design



G Mall, Islamabad

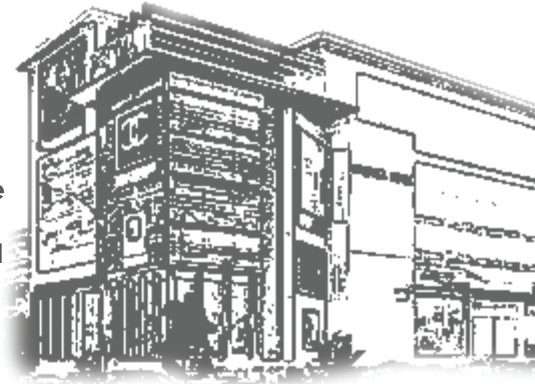
This state of the art facility in **Ghauri town** has the first mall of the town with a number of apartments, 2 pent houses at the top and offices. The building is facing the **Islamabad expressway** and thus, can be seen from a distance. The building is designed with modern touch with open balconies. Parking facility is provided in the basement and on the ground floor to accommodate the flux of cars."



Project Location Faisalabad

Area 237,898 Sq. ft

Services Offered Architecture Design, Structure Design, Services Design including Plumbing, Electrical and HVAC/Mechanical, Interior Design



Velvet Commercial, Faisalabad

Velvet mall is the modern commercial destination address of Faisalabad. Two basement parking floors offer huge parking spaces catering commercial parking requirements, a huge central atrium, commercial shops on three floors, food court on one floor, cinema and gaming areas for kids on one floor, pent house & restaurant on the top floor.



Project Location Rawat

Area 39,970 Sq. ft

Services Offered Architecture Design, Structure Design, Services Design including Plumbing, Electrical and HVAC/Mechanical, Interior Design



Rawat Marquee, Islamabad

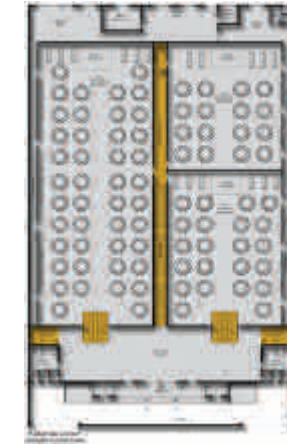
Rawat Marquee is a classical style wedding hall, offering royal interior well suited to the grandeur of cultural weddings. With flexible hall partitions, huge kitchen, auxiliary areas and ample parking, it is the destination wedding place.



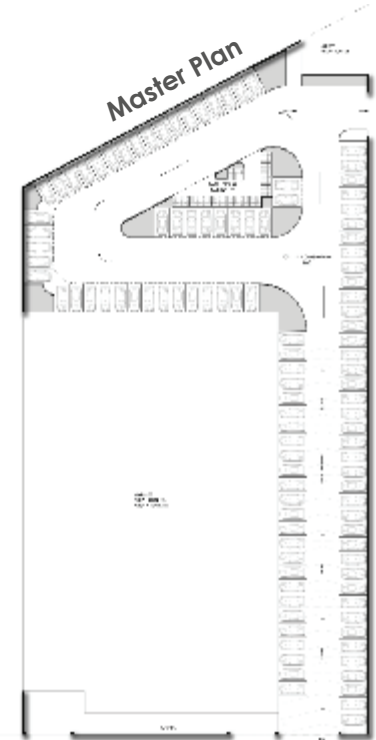
1st Floor Plan



Basement Floor Plan



Ground Floor Plan



Project Location TNT Islamabad

Area 64,284 Sq. ft

Services Offered Architecture Design, Structure Design, Services Design including Plumbing, Electrical and HVAC/Mechanical, Interior Design



LG PLAN final



GROUND FLOOR FINAL



FLOOR PLANS 12

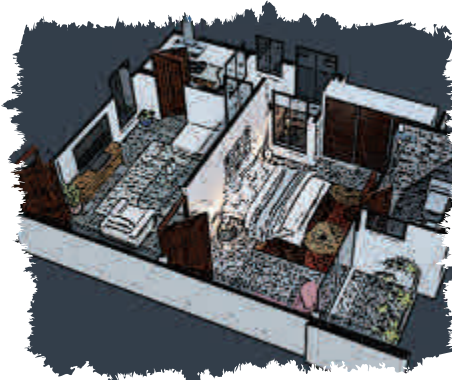
Overseas Heights, TNT

Overseas Height is a mixed-use building, offers commercial and residence under one roof. An epitome of sustainable and walkable architecture, Overseas Heights, has well ventilated luxury apartments, the planning of apartments caters highly for sunlight and wind direction, and offers the destination lifestyle in Islamabad. **The project was presented in IREIS held at ADNEC, Abu Dhabi, in 2017.**

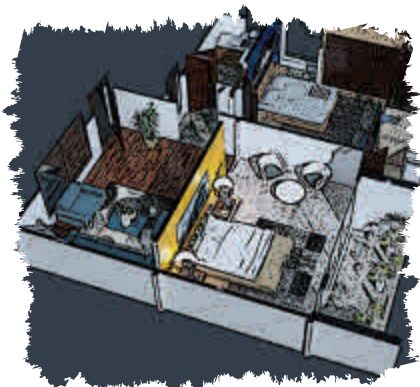
2 BED TYPE -01



1 BED TYPE 02



2 BED TYPE -02



1 BED TYPE 01



ONE BED TYPE A



ONE BED TYPE B



2 BED TYPE A



2 BED TYPE B



Project Location TNT Islamabad

Area 12,690 Sq. ft

Services Offered Architecture Design, Structure Design, Services Design including Plumbing, Electrical and HVAC/Mechanical, Interior Design

Water Tank Office, TNT

Old Water tank structure has been redesigned by US, bringing in new character to the building while carrying out a remarkable façade uplift. The rejuvenated building offers offices for society management, meeting rooms, conference and waiting areas for multipurpose usage."



Ground Floor Plan



1st Floor Plan



Front Elevation



e
xl

Pak Sweet Home, Islamabad

Basement Plan



Ground Floor Plan



1st Floor Plan



Project Location Islamabad

Area 94,440 Sq. ft

Services Offered Architecture Design, Structure Design, Services Design including Plumbing, Electrical and HVAC/Mechanical, Interior Design



Golf Visio, Apartments



Project Location Islamabad

Area 22,370 Sq. ft

Services Offered Architecture Design, Structure Design, Services Design including Plumbing, Electrical and HVAC/Mechanical, Interior Design



Forza, Heights



Residential Projects

Residential Projects



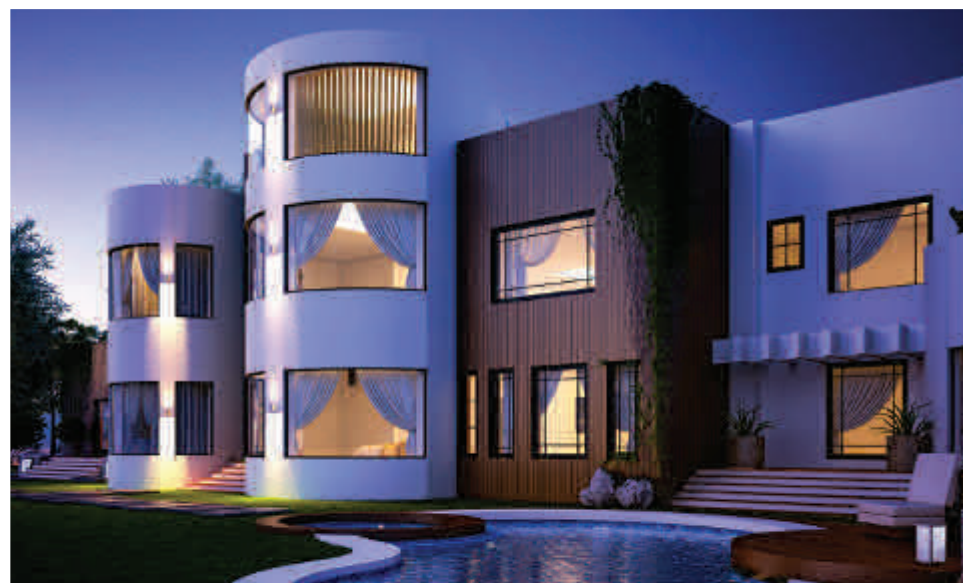
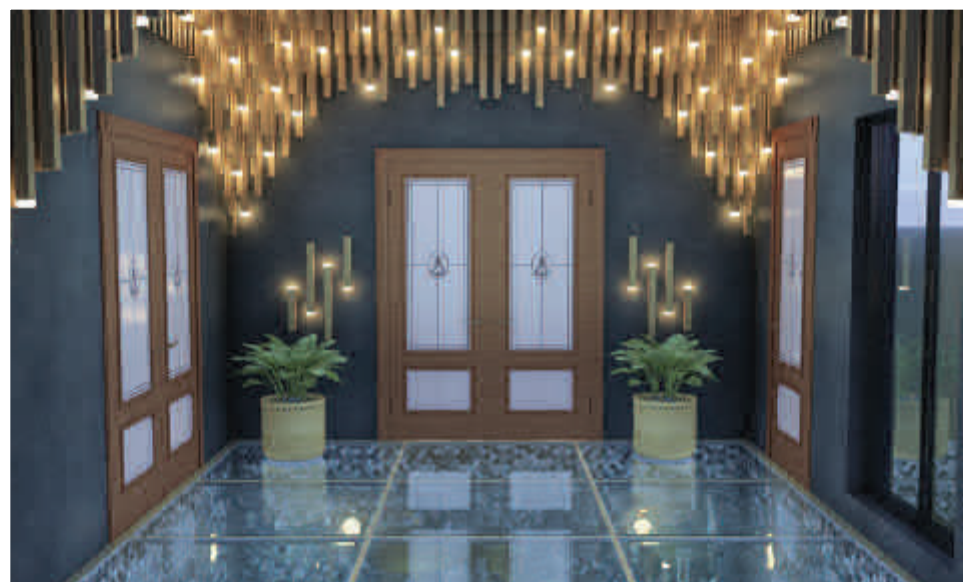
Project Location Bahria Town, Islamabad

Area 14,691 Sq. ft

Services Offered Complete Renovation including façade uplift and Interior Design

343-Islamabad

Complete **Interior Renovation and Façade uplift Project**. It's an exquisitely **designed and decorated 8 Bedroom Mansion** featuring private sitting rooms, a huge family room, lavish drawing and dining areas connected amicably through richly decorated lobbies and corridors.





Project Location Muslim Town, Faisalabad

Area 10572 Sq. ft

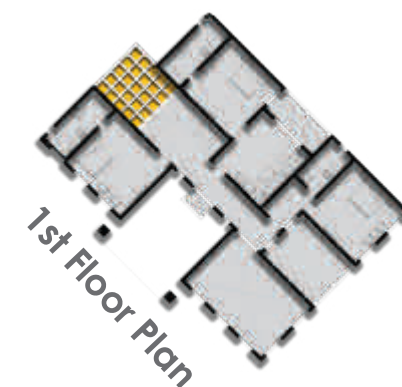
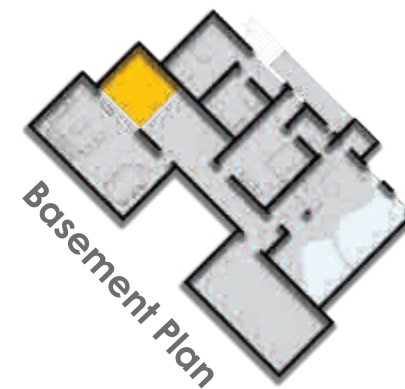
Services Offered Complete Renovation including façade uplift and Interior Design

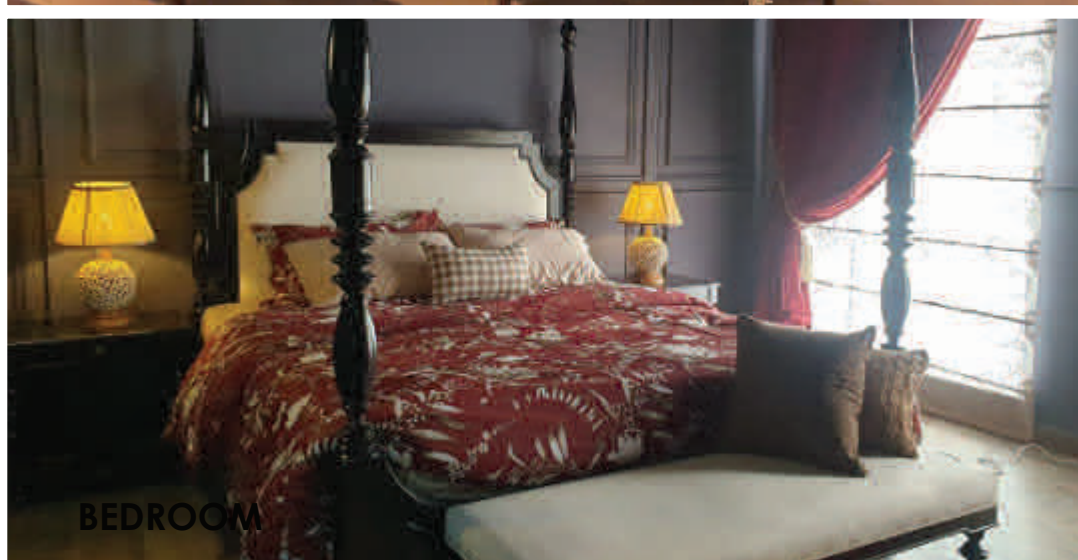
Faisalaba House

"Faisalabad house is designed according to the dreams of our client. The client wanted a Greek inspired villa that stands out between the old construction of the surroundings. Special attention was given to the details and overall



proportions of the building. The interior of the house is designed in lush colors with classical details that compliments the façade."





Project Location DHA-II, Sector F, Islamabad

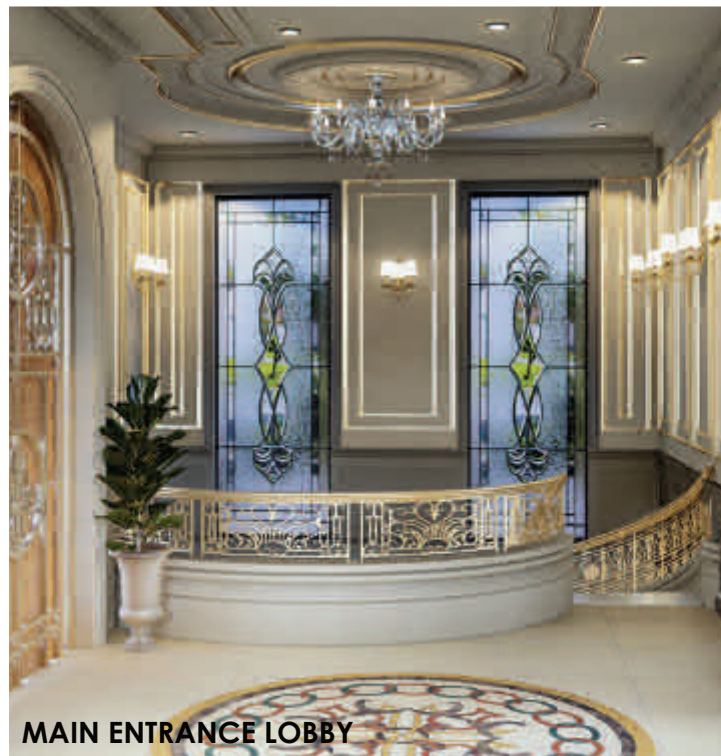
Area 10,000 Sq. ft

Services Offered Architecture Design, Structure & MCP Design,
Exterior Design, Interior Design & Decor, Landscape design.

Col Babar, Residence



"This house is designed in the famous **Moroccan style**. The building stands prominent yet giving a **soft look owing to its earthly tones and simple design.**"



MAIN ENTRANCE LOBBY



MASTER BEDROOM

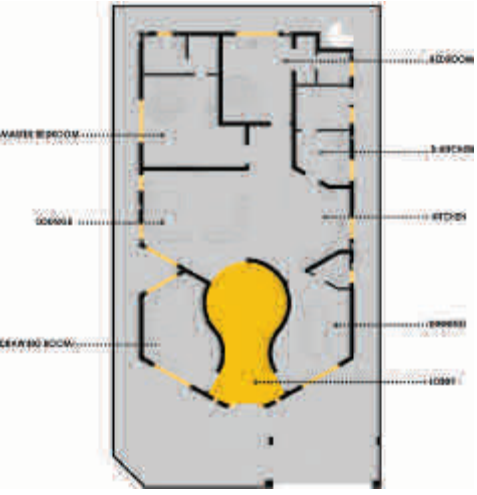
Project Location DHA-II, Islamabad

Area 6225 Sq. ft

Services Offered Complete Renovation, Exterior and Interior Design

Col Nawaz-Residency

“Modern & minimalistic, this house is designed focusing on modern living styles. **Straight design elements** dictate the facade using combination of **white & warm lights**. Central lobby is the epitome of design concluding formal and informal spaces. All interior spaces are designed with **pastal lines and modernistic features.**”



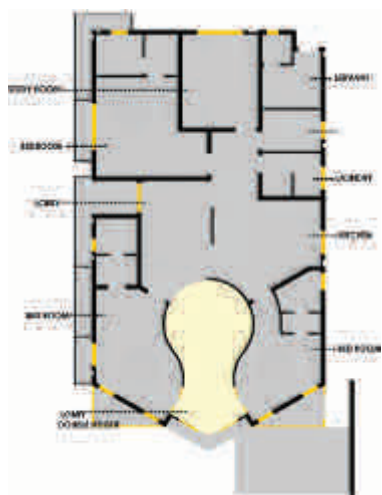
Ground Floor Plan



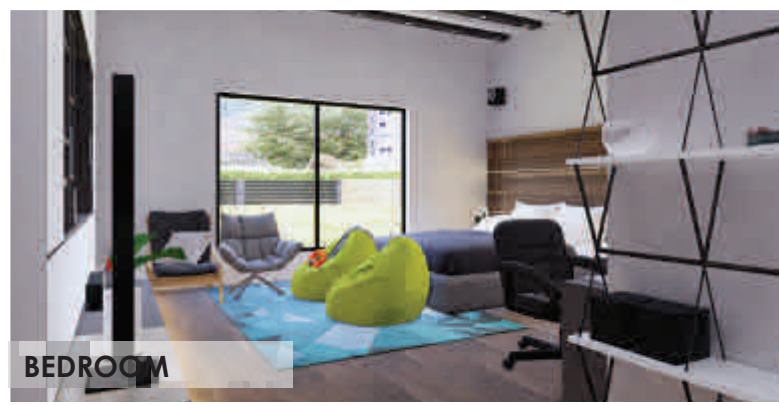
EXTERIOR VIEW



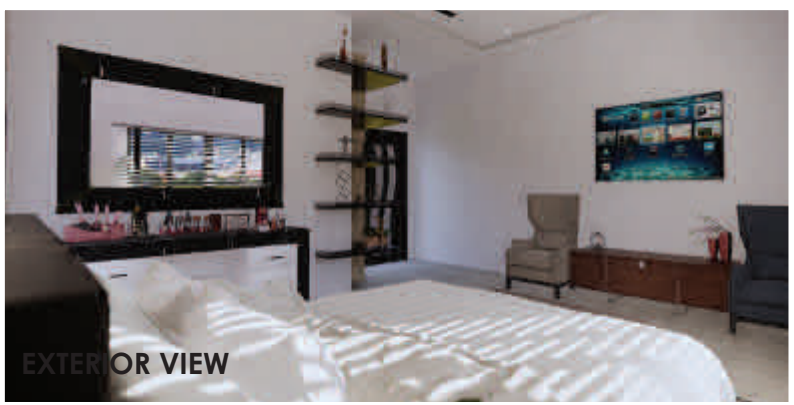
TOP VIEWS



1st Floor Plan



BEDROOM



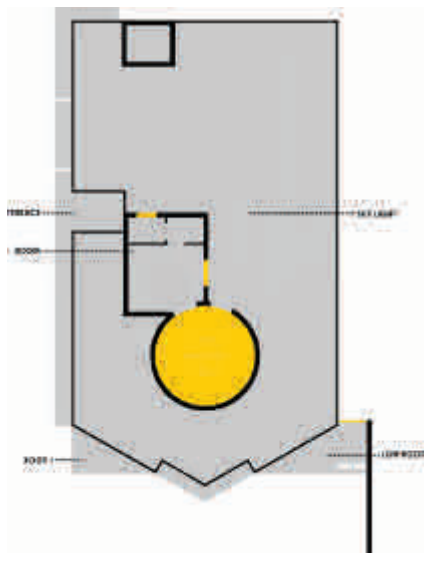
EXTERIOR VIEW



STAIRCASE



DRAWING ROOM



Mummy Plan



KITCHEN



LOUNGE

Project Location DHA-II, Islamabad

Area 6225 Sq. ft

Services Offered Complete Renovation, Exterior and Interior Design

Col Nayyar-Residency

“ A modern house with pastel lines **and straight line features**, this residence hosts a **minimalistic attic.**”



Project Location Rehman Enclave, Islamabad

Area 10 Marla, 1 Kanal home

Services Offered Complete Renovation, Exterior and Interior Design

Multiple Houses, Rehman Enclave

A number of houses have been **designed for Rehman Enclave, Islamabad.**

Client's taste, requirements and functionality of the buildings were kept in mind while shaping them. The **elevations varies from modern to classical in style.**



Project Location Shaheen Enclave, Sargodha

Area 1792 Sq. ft

Services Offered Complete Renovation, Exterior and Interior Design

Model House, Sargodha

“Model houses designed & delivered by **Urban Solutions**, in **Shaheen Enclave**. Concrete facade and out of the box designs for a **fancy living** experience..”



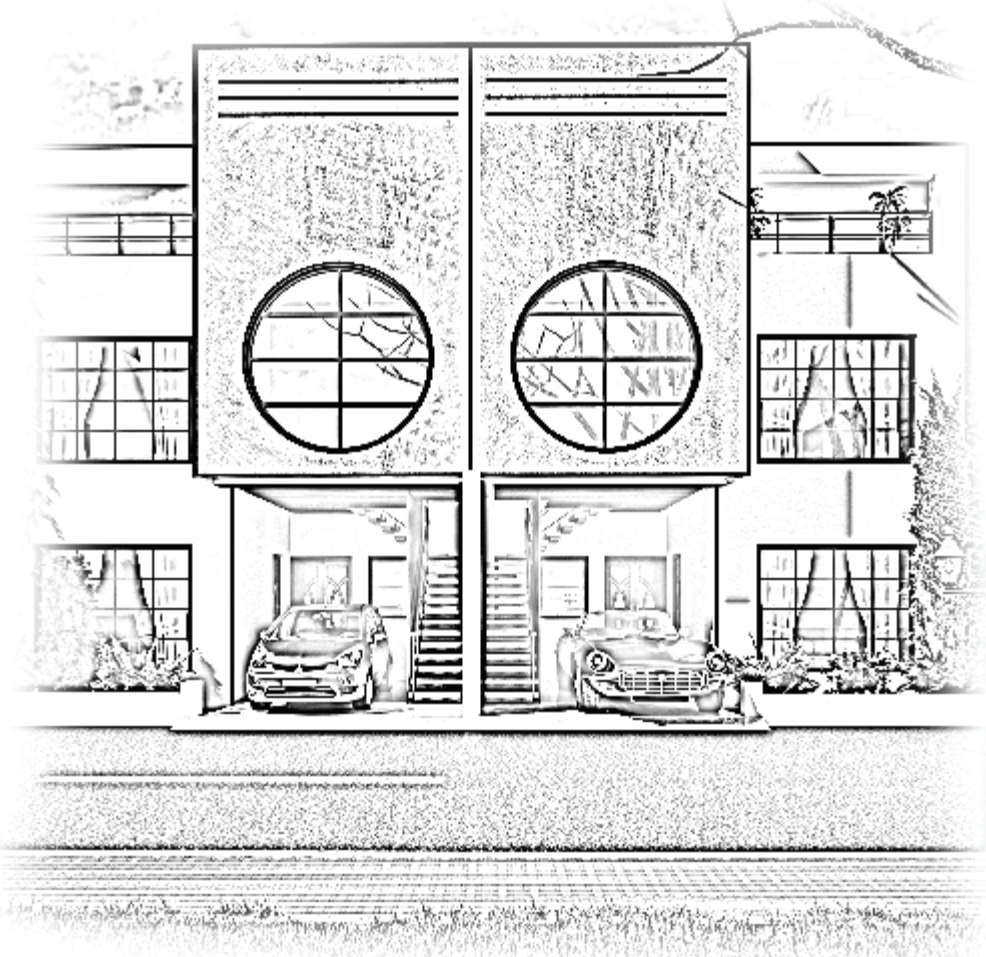
Ground floor Plan



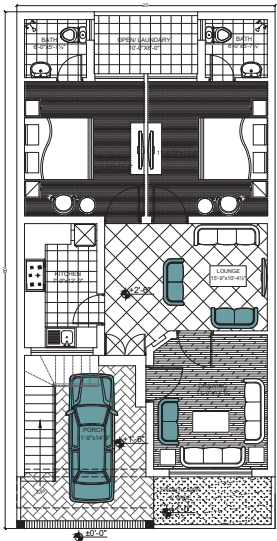
1st floor Plan



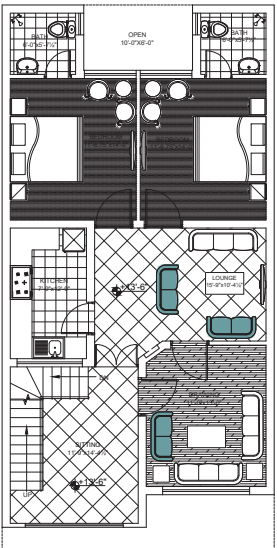
Mumty Plan



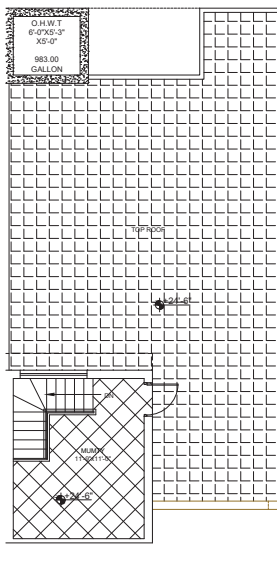
Ground Floor Plan



1st Floor Plan



Mumty Plan



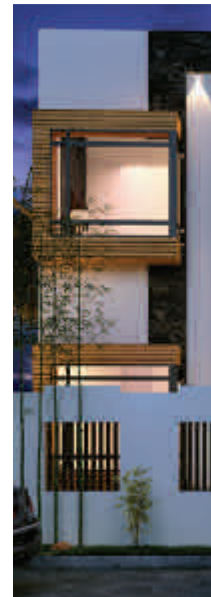
Project Location Sufi City, Mandi Bahauddin

Area 7 Marla, 10 Marla, 14 Marla,

Services Offered Complete Renovation, Exterior
and Interior Design

Multiple Houses, Sufi City

“Numerous houses were **planned & designed** in sufi city for variety of clients, according to their requirments, varying in sizes from **5 marla to 1 kanal.**”



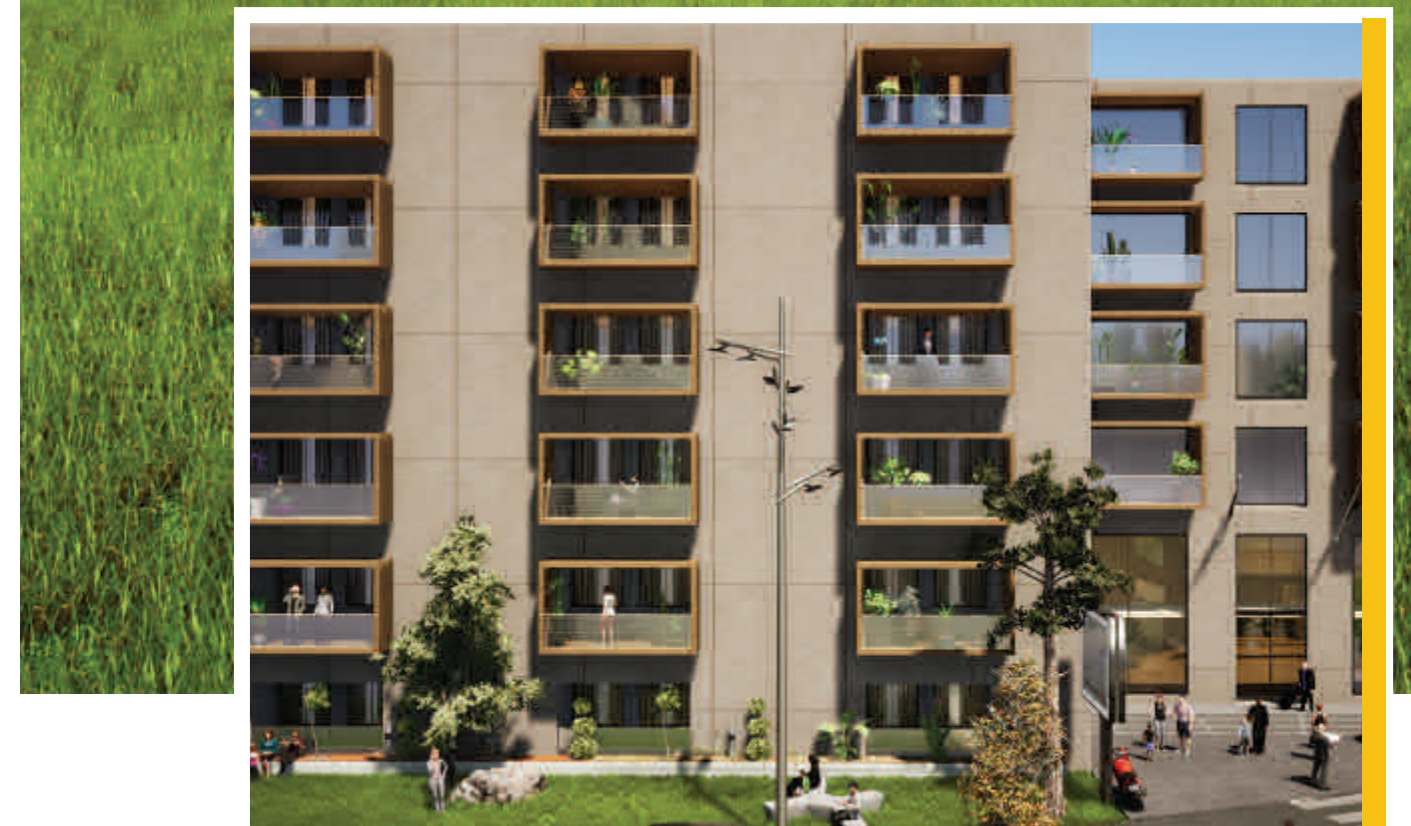
Project Location Sufi City, Mandi Bahauddin

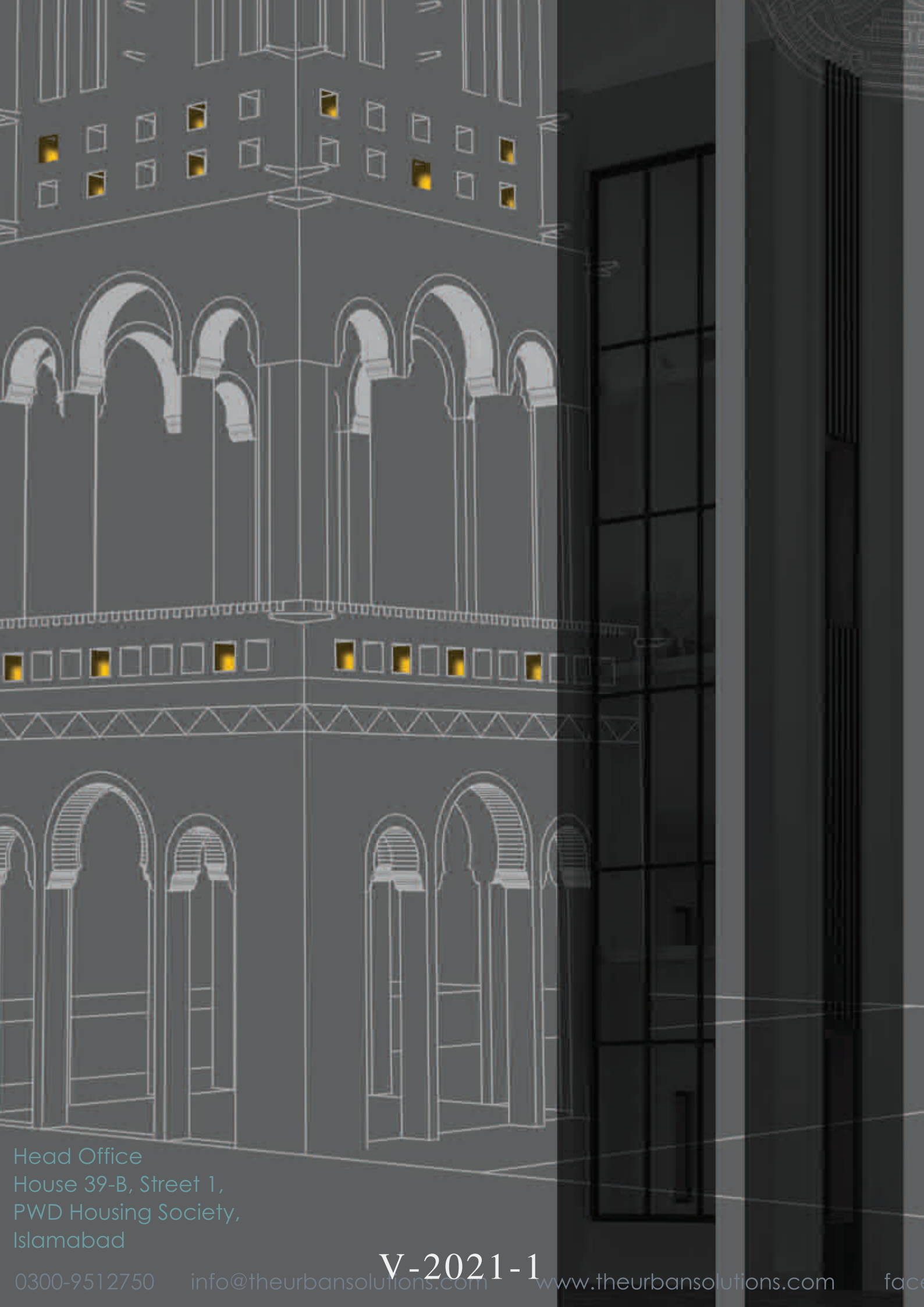
Area 94,440 sq.ft

Services Offered Complete Renovation, Exterior and Interior Design

Mid way-Apartments

Mid Mixed use complex is located at Islamabad Highway. It is a “modernistic blend of minimalistic interiors with extruded balconies. A self sustainable building with earthy tones, Mid-Way is life style destinations.





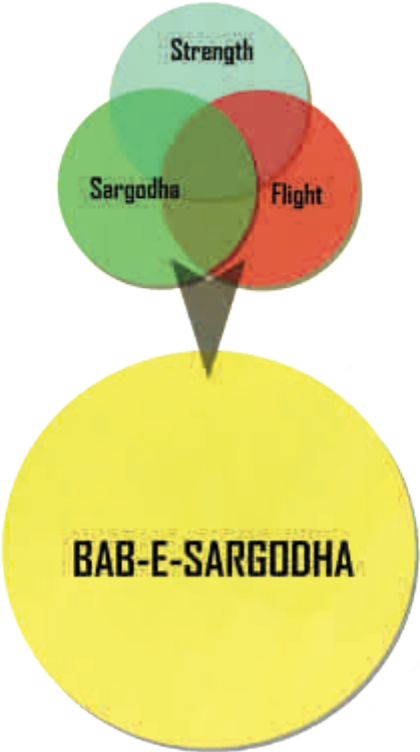
Head Office
House 39-B, Street 1,
PWD Housing Society,
Islamabad

0300-9512750 info@theurbansolutions.com **V-2021-1** www.theurbansolutions.com face

Project Location Sargodha
Services Offered Architecture Design, Structure Design

Sargodha Toll Plaza, Sargodha

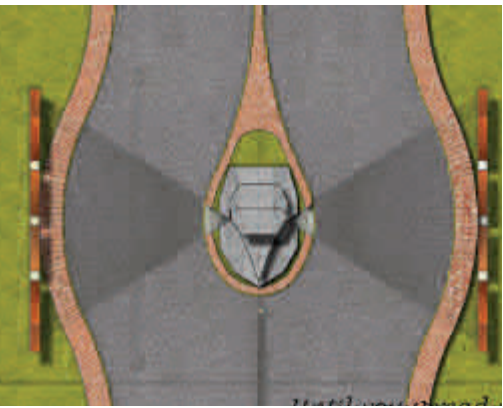
“A combination of strength & flight **Bab-e-Sargodha**, is the emblem for the **city of Falcons**, “**Sargodha**”. It is built at the entrance to sargodha city on lahore sargodha road.”



Its time to become an eagle, spread your wings, learn new horizons and fly as high as you can!



It's time to soar with the eagles!



Until you spread your wings, you have no idea how far you will fly

